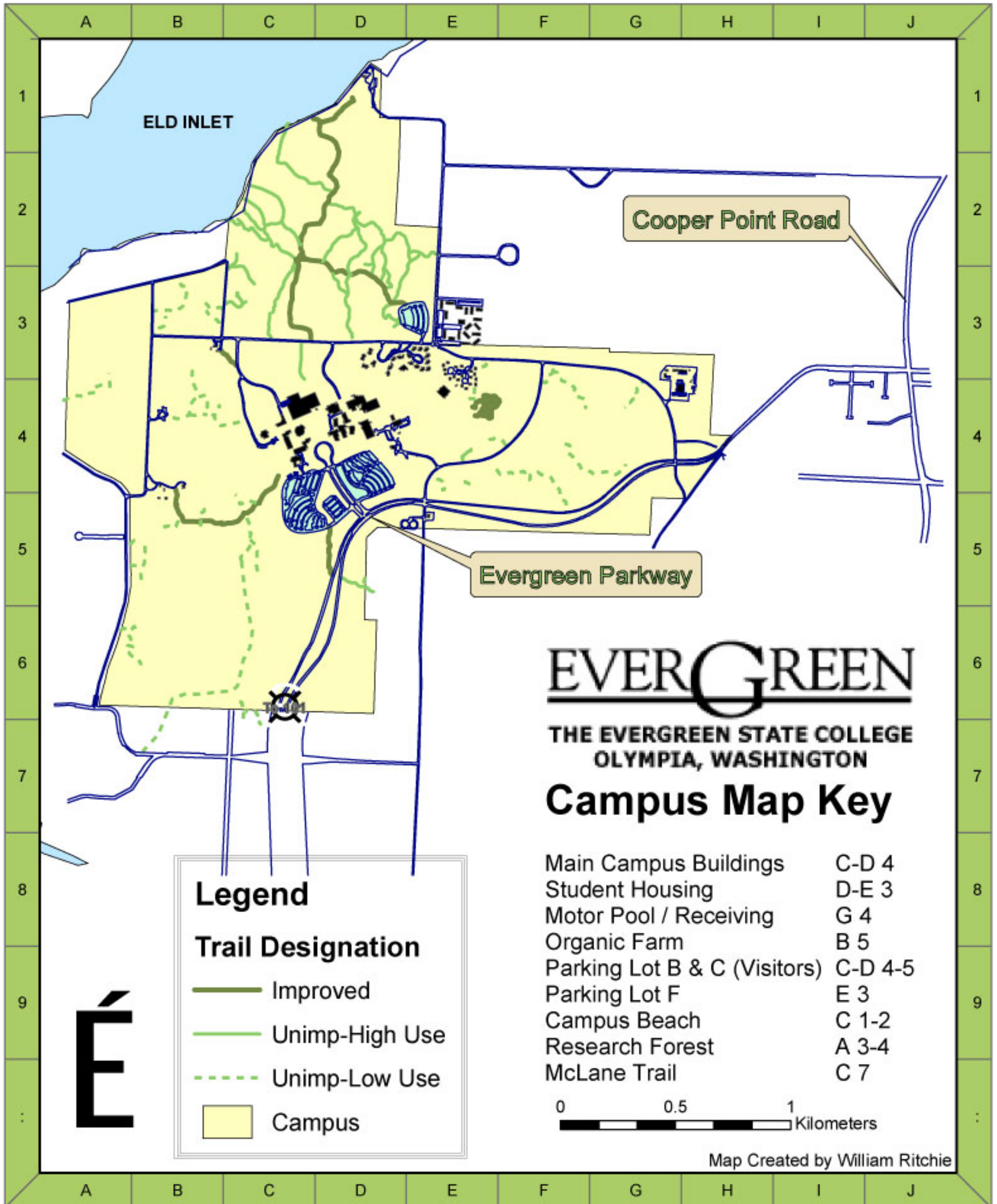
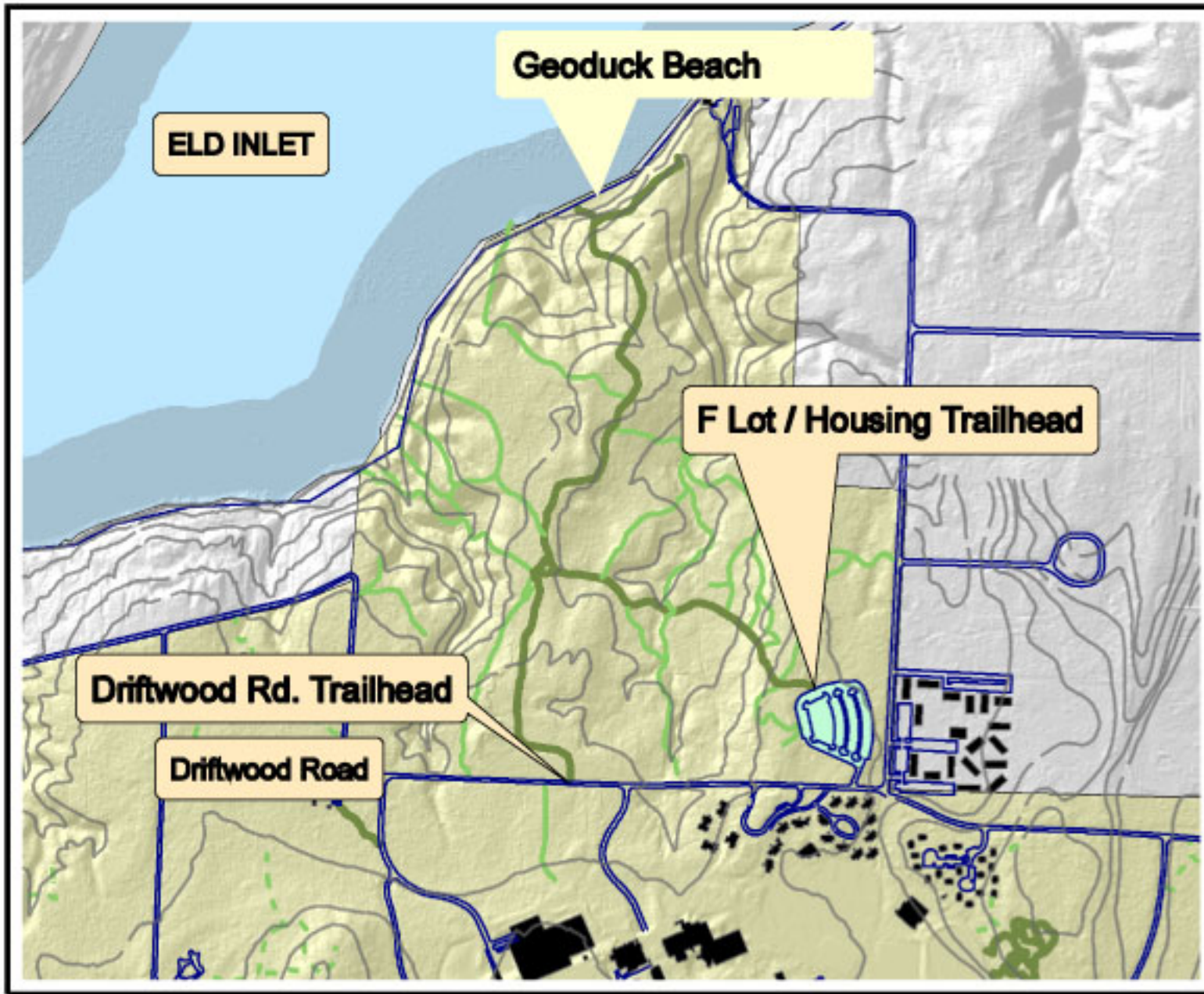


# The Evergreen State College Campus Trails



# The Evergreen State College

## Geoduck Beach / Eld Inlet Trails

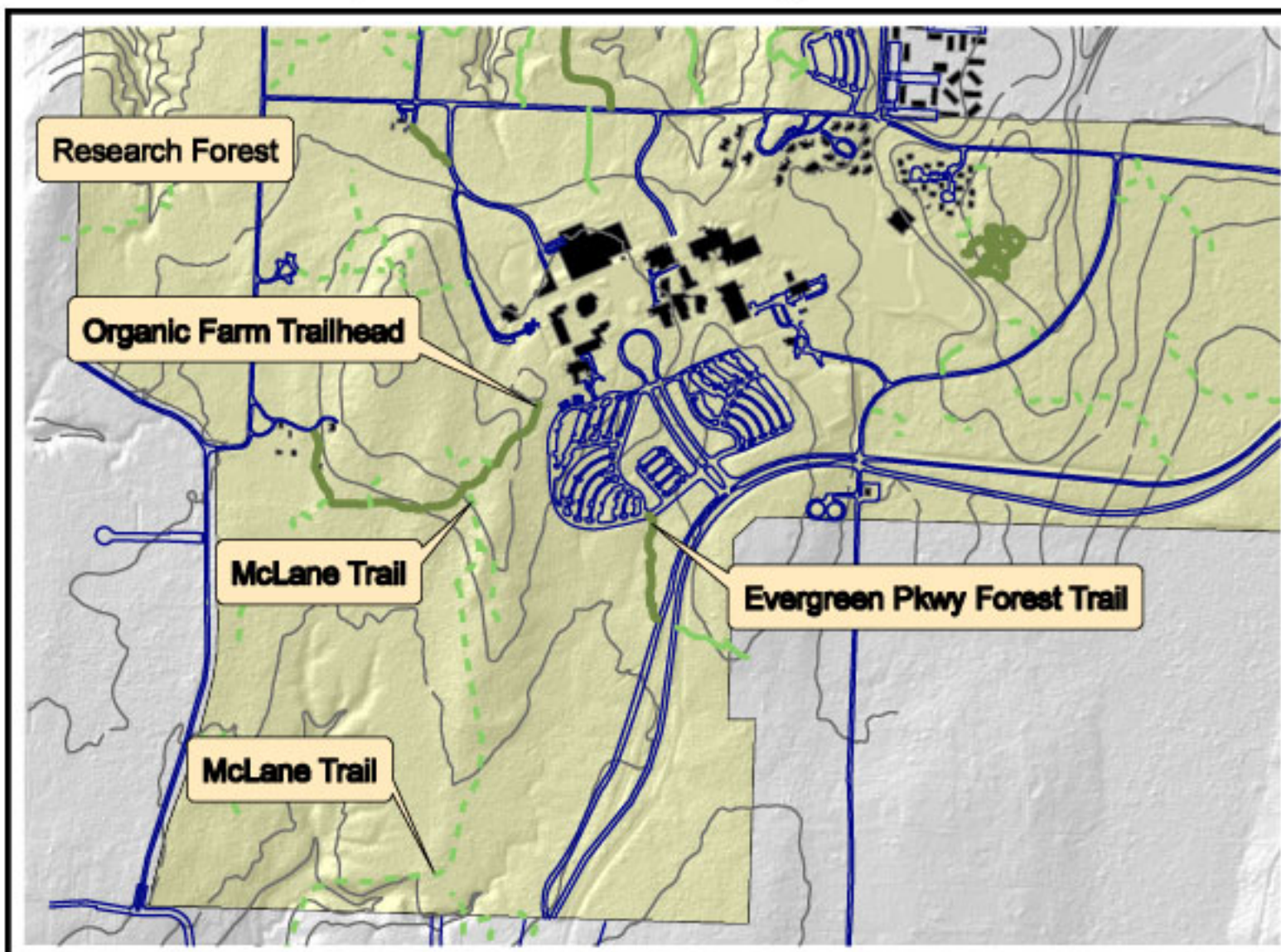


The Evergreen State College  
2700 Evergreen Parkway, NW  
Olympia, Washington 98505

(360) 867-6000






[www.evergreen.edu](http://www.evergreen.edu)

## South Campus Reserve / Organic Farm Trails



### Legend

#### Trail Designation

-  Improved
-  Unimp-High Use
-  Unimp-Low Use
-  25 ft contour
-  Campus

0 250 500 1,000 Meters