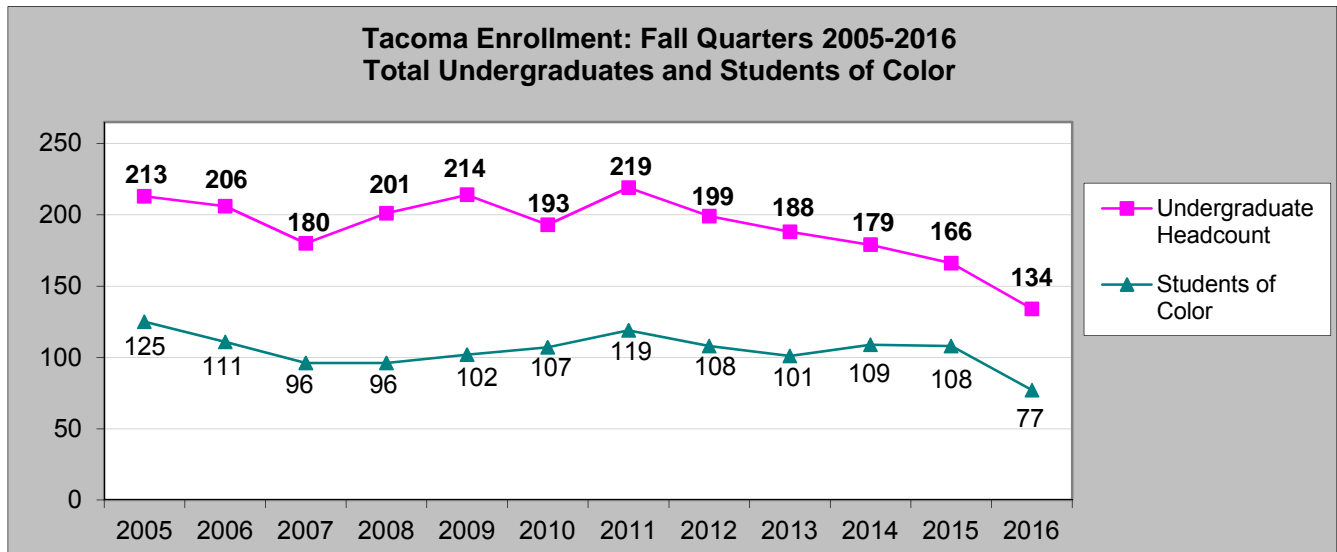


# Tacoma Program

## Fall Quarter Student Enrollment Demographics

### Fall 2010 - Fall 2016



Fall Quarter	2010	2011	2012	2013	2014	2015	2016
Undergraduate Headcount	193	219	199	188	179	166	134
Male	53 27%	55 25%	50 25%	56 30%	62 35%	56 34%	35 26%
Female	140 73%	164 75%	149 75%	132 70%	117 65%	110 66%	99 74%
<b>Race Summary</b>							
White, Non-Hispanic, Not Multi-racial	79	87	80	80	63	54	54
Students of Color	107	119	108	101	109	108	77
Unknown	7	13	11	7	7	4	3
% Students of Color	55%	54%	54%	54%	61%	65%	57%
<b>v2. Racial Ethnic Subcategories presented below are mutually exclusive. Students are rolled into a single category.</b>							
Hispanic/Latino, of any race	15	18	13	11	12	16	11
Black, Non-hispanic	69	70	66	63	73	69	42
American Indian/Alaskan Native, Non-hispanic	8	7	4	3	4	4	7
Asian, Non-hispanic	2	5	4	5	2	4	3
Pacific Islander/Native Hawaiian, Non-hispanic	3	2	2	2	1	1	2
Multiracial, Non-hispanic	10	17	19	17	17	14	12
White/Caucasian, Non-hispanic	79	87	80	80	63	54	54
Unknown	7	13	11	7	7	4	3
<b>v3. Racial Ethnic Subcategories presented below are <u>NOT</u> mutually exclusive. Students can identify in more than one category.</b>							
Hispanic/Latino	15	18	13	11	12	16	11
Black/African-American	78	84	82	77	86	80	51
American Indian/Alaskan Native	9	16	14	9	10	8	11
Asian	4	9	7	8	10	10	4
Pacific Islander/Native Hawaiian	5	4	2	2	1	1	2
White/Caucasian	90	107	101	98	79	73	71

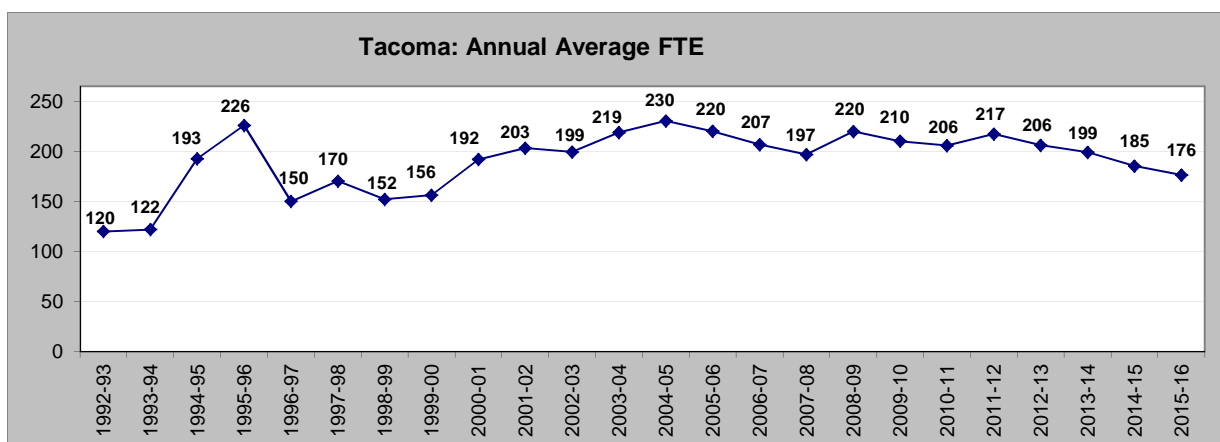
<b>Fall Quarter</b>	<b>2010</b>	<b>2011</b>	<b>2012</b>	<b>2013</b>	<b>2014</b>	<b>2015</b>	<b>2016</b>
Washington Residents	192 99%	219 100%	198 99%	188 100%	175 98%	165 99%	133 99%
Nonresidents	1 1%	0 0%	1 1%	0 0%	4 2%	1 1%	1 1%
Average Age	38	38	37	38	38	38	38
Non-traditional Age (24 or older)	182 94%	198 90%	178 89%	174 93%	166 93%	157 95%	117 87%
Below Federal Poverty Level	148 77%	168 77%	143 72%	147 78%	147 82%	130 78%	99 74%
Low Income (≤ 150% of federal poverty level)	156 81%	181 83%	157 79%	152 81%	152 85%	139 84%	108 81%
First Generation Baccalaureate (per FAFSA or application)	107 55%	122 56%	108 54%	94 50%	96 54%	79 48%	64 48%
Disability (reported)	22 11%	22 10%	15 8%	14 7%	21 12%	23 14%	18 13%
Veterans	18 9%	12 5%	12 6%	12 6%	18 10%	18 11%	8 6%
New Students (Degree-seeking)	90 47%	80 37%	79 40%	67 36%	55 31%	60 36%	43 32%
Continuing Students (Degree-seeking)	102 53%	139 63%	120 60%	121 64%	124 69%	106 64%	91 68%
Special (Not Matriculated)	1 1%	0 0%	0 0%	0 0%	0 0%	0 0%	0 0%
Full-time (12-20 credits)	189 98%	214 98%	195 98%	188 100%	177 99%	158 95%	131 98%
Part-time (Less than 12 credits)	4 2%	5 2%	4 2%	0 0%	2 1%	8 5%	3 2%
<b>Fall Credit Hour Detail</b>	<b>2010</b>	<b>2011</b>	<b>2012</b>	<b>2013</b>	<b>2014</b>	<b>2015</b>	<b>2016</b>
2-4 credits	0	0	1	0	0	0	0
5-8 credits	4	0	1	0	0	3	0
9-11 credits	0	5	2	0	2	5	3
12-15 credits	50	49	49	24	10	3	3
16 credits	132	147	135	158	162	152	123
17-18 credits	4	13	8	3	4	2	3
19-20 credits	3	5	3	3	1	1	2
<b>% at 16 or more credits</b>	<b>72%</b>	<b>75%</b>	<b>73%</b>	<b>87%</b>	<b>93%</b>	<b>93%</b>	<b>96%</b>

## Tacoma Program Student FTE

### Each Quarter and Annual Average: 1992-93 through Fall 2016

FTE is based on 10th day enrollment for Tacoma students (based on student campus code) in programs, courses, contracts, and internships. Any state waiver and self-sustaining enrollments are excluded. 15 enrolled credits equals 1 undergraduate FTE.

Academic Year	Fall FTE	Winter FTE	Spring FTE	Annual Average Quarterly FTE	Target FTE	Difference actual - target
1992-93	119.5	117.1	123.6	120.1		
1993-94	117.4	118.6	129.9	122.0		
1994-95	193.4	187.6	197.4	192.8		
1995-96	233.0	222.7	222.1	225.9		
1996-97	142.8	152.3	155.3	150.1		
1997-98	181.4	173.1	156.4	170.3		
1998-99	158.4	149.2	148.7	152.1		
1999-00	160.1	159.3	149.4	156.2		
2000-01	189.1	191.8	194.7	191.9		
2001-02	202.8	208.2	198.9	203.3		
2002-03	194.1	200.9	203.2	199.4		
2003-04	213.1	215.0	228.2	218.8	225.0	-6.2
2004-05	246.4	224.7	219.8	230.3	225.0	5.3
2005-06	223.5	218.4	217.9	220.0	225.0	-5.0
2006-07	211.0	211.4	197.9	206.7	225.0	-18.3
2007-08	189.8	200.3	200.6	196.9	225.0	-28.1
2008-09	206.9	227.0	225.6	219.8	200.0	19.8
2009-10	226.6	209.9	193.9	210.1	200.0	10.1
2010-11	200.0	205.9	211.1	205.7	200.0	5.7
2011-12	230.2	214.9	207.1	217.4	200.0	17.4
2012-13	208.0	208.0	202.7	206.2	200.0	6.2
2013-14	199.3	199.5	198.4	199.1	200.0	-0.9
2014-15	188.6	192.1	175.5	185.4	200.0	-14.6
2015-16	172.9	181.6	174.6	176.4	200.0	-23.6
2016-17	141.9				200.0	



## TACOMA program admissions 2011-2016

Applicant Inquiries	Fall 2011	Fall 2012	Fall 2013	Fall 2014	Fall 2015	Fall 2016
# inquiries	110	108	97	83	88	70
# inquiries from <b>students of color*</b>	56	53	51	42	48	33
# inquiries from <b>WA residents</b>	100	100	89	75	86	69
# inquiries from <b>non-residents**</b>	3	2	2	2	2	0
# inquiries from <b>contested residency</b>	7	6	6	6	0	1

Completed Applications	Fall 2011	Fall 2012	Fall 2013	Fall 2014	Fall 2015	Fall 2016	5-year weighted average
# completed applications	92	99	82	72	77	58	Average completion rate 87.0%
% of applications that were completed	83.6%	91.7%	84.5%	86.7%	87.5%	82.9%	
# completed applications from <b>students of color*</b>	51	48	43	41	43	29	SOC average completion 89.9%
% SOC who completed application	91.1%	90.6%	84.3%	97.6%	89.6%	87.9%	
# completed applications from <b>WA residents</b>	86	93	76	66	76	58	WA-Res average completion 88.1%
% WA resident completed	86.0%	93.0%	85.4%	88.0%	88.4%	84.1%	
# completed applications from <b>non-residents**</b>	1	1	1	2	1	0	Non-Res average completion 62.5%
% non-resident completed	33.3%	50.0%	50.0%	100.0%	50.0%		
# completed applications from <b>contested residency</b>	5	5	5	4	0	0	Contested-res ave. completion 73.7%
% contested residents admitted	71.4%	83.3%	83.3%	66.7%		0.0%	

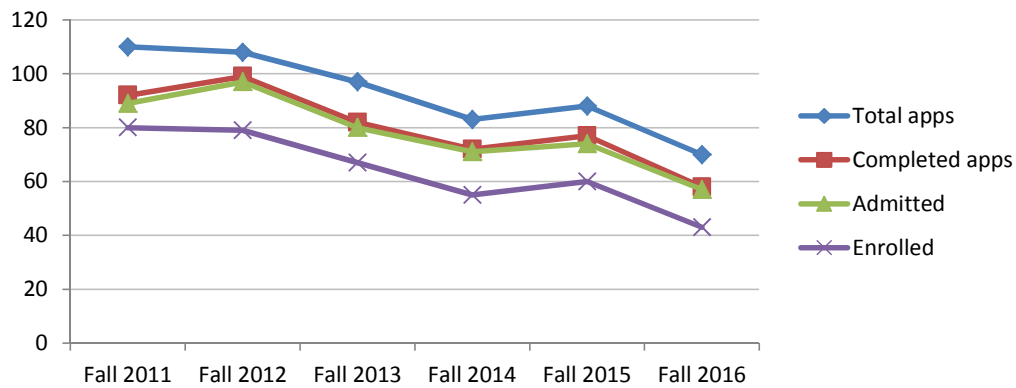
Admission	Fall 2011	Fall 2012	Fall 2013	Fall 2014	Fall 2015	Fall 2016	5-year weighted average
Total # offered admission	89	97	80	71	74	57	Average acceptance 97.7%
% admitted	96.7%	98.0%	97.6%	98.6%	96.1%	98.3%	
# students of color offered admission	48	47	42	41	41	29	SOC average acceptance 98.0%
% SOC admitted	94.1%	97.9%	97.7%	100.0%	95.3%	100.0%	
# WA residents offered admission	83	91	74	65	73	57	WA-Res average acceptance 97.6%
% WA resident admitted	96.5%	97.8%	97.4%	98.5%	96.1%	98.3%	
# non-residents offered admission	1	1	1	2	1	0	Non-Res average acceptance 100.0%
% non-resident admitted	100.0%	100.0%	100.0%	100.0%	100.0%		
# contested res offered admission	5	5	5	4	0	0	Contested-res ave. acceptance 100.0%
% contested residents admitted	100.0%	100.0%	100.0%	100.0%			

Enrolled	Fall 2011	Fall 2012	Fall 2013	Fall 2014	Fall 2015	Fall 2016	5-year weighted average
Total New students enrolled	80	79	67	55	60	43	Average yield rate 80.2%
yield from admission	89.9%	81.4%	83.8%	77.5%	81.1%	75.4%	
# students of color enrolled	41	45	36	37	35	22	SOC average yield 87.5%
SOC yield from admission	85.4%	95.7%	85.7%	90.2%	85.4%	75.9%	
# WA residents enrolled	75	76	62	52	60	43	WA-Res average yield 81.4%
WA resident yield from admission	90.4%	83.5%	83.8%	80.0%	82.2%	75.4%	
# non-residents enrolled	1	0	1	0	0	0	Non-Res average yield 20.0%
non-resident yield from admission	100.0%	0.0%	100.0%	0.0%	0.0%		
# contested res enrolled	4	3	4	3	0	0	Contested-res ave. yield 71.4%
contested res yield from admission	80.0%	60.0%	80.0%	75.0%			
# regular admission	74	78	65	55	59	40	
# conditional admission	6	1	2	5	1	3	
% conditional	7.5%	1.3%	3.0%	9.1%	1.7%	7.0%	

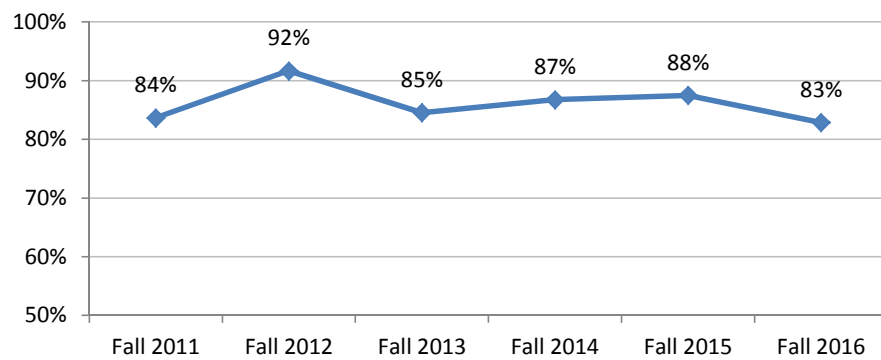
\*Students of Color in this presentation include African-American, Asian, Pacific Islander, Native American/Alaskan Native, Hispanic/Latinx students, and Multi-racial students.

\*\*Non-residents include non-residents and international applicants.

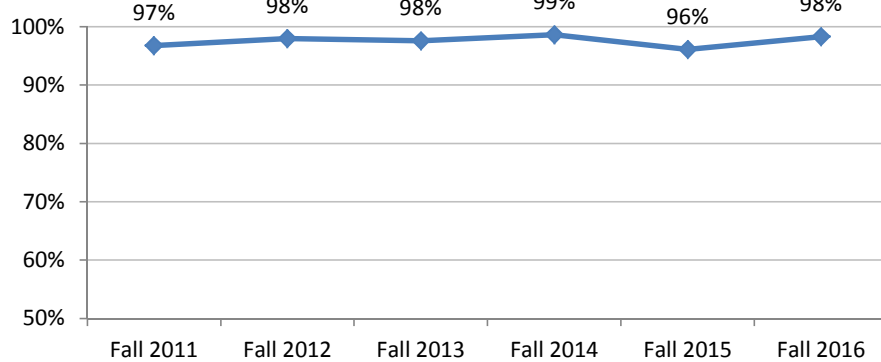
## Tacoma New Students Application to Enrollment



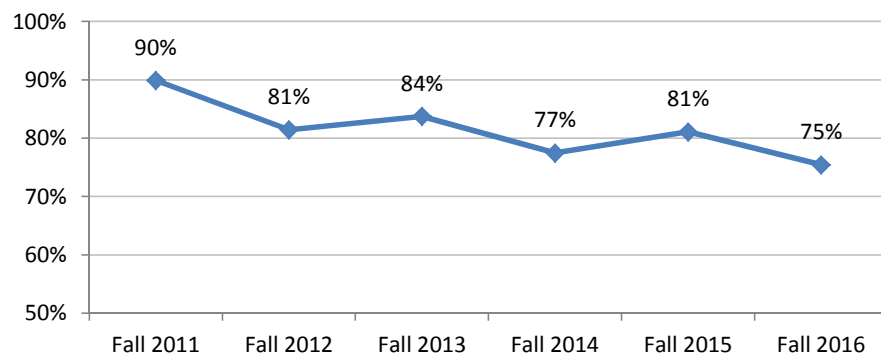
### App completion rate



### Admission rate



### Yield from admission



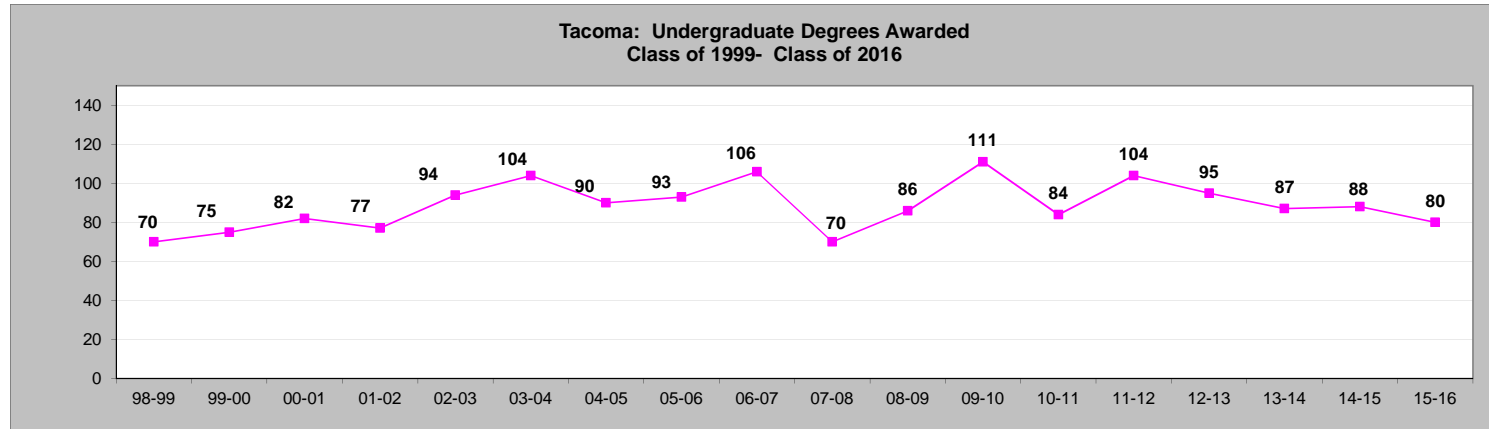
## Tacoma Program Retention and Graduation

### TOTAL Undergraduate Degrees Awarded

Academic Year	98-99	99-00	00-01	01-02	02-03	03-04	04-05	05-06	06-07	07-08	08-09	09-10	10-11	11-12	12-13	13-14	14-15	15-16
<b>Total # of Degrees Awarded*</b>	70	75	82	77	94	104	90	93	106	70	86	111	84	104	95	87	88	80

\*Number of degrees awarded fall through summer of each academic year, updated as of 1/5/17.

Academic Year	82-83	83-84	84-85	85-86	86-87	87-88	88-89	89-90	90-91	91-92	92-93	93-94	94-95	95-96	96-97	97-98
<b>Total # of Degrees Awarded</b>	25	38	48	48	53	70	68	89	68	66	54	90	49	75	58	96



### TOTAL Tacoma Undergraduate Fall-to-Fall Retention Rate\*

Fall-to-Fall	F98-F99	F99-F00	F00-F01	F01-F02	F02-F03	F03-F04	F04-F05	F05-F06	F06-F07	F07-F08	F08-F09	F09-F10	F10-F11	F11-F12	F12-F13	F13-F14	F14-F15	F15-F16
<b>Retention rate all students</b>	81%	85%	80%	80%	86%	86%	80%	87%	81%	84%	90%	90%	90%	86%	89%	89%	89%	83%
<b>Retention rate students of color</b>	82%	82%	78%	78%	83%	86%	77%	85%	82%	84%	86%	88%	87%	88%	91%	89%	91%	82%

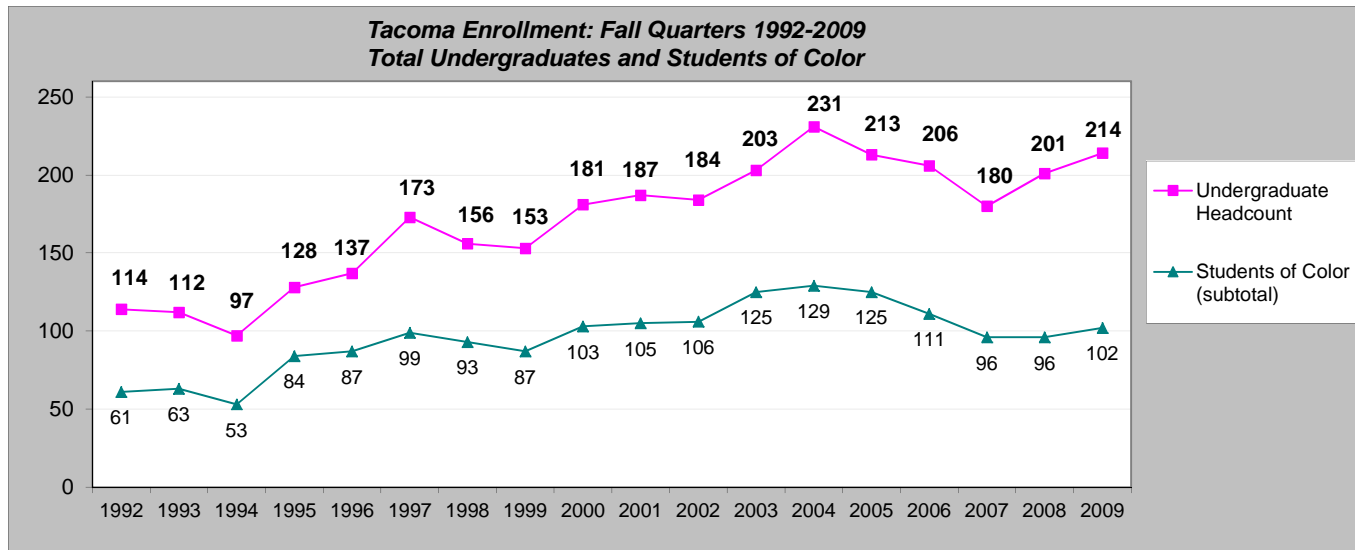
\*Retention adjusted for graduation.

**Admission, Retention, and Graduation of Entering Student Cohorts Fall 1998 - Fall 2015**

Fall Quarter	1998	1999	2000	2001	2002	2003	2004	2005	2006	2007	2008	2009	2010	2011	2012	2013	2014	2015
# of New Degree-seeking Tacoma Students	73	70	93	88	74	81	106	78	72	77	85	62	90	80	79	67	55	60
Fall-to-Fall Retention*	F98-F99	F99-F00	F00-F01	F01-F02	F02-F03	F03-F04	F04-F05	F05-F06	F06-F07	F07-F08	F08-F09	F09-F10	F10-F11	F11-F12	F12-F13	F13-F14	F14-F15	F15-F16
# of NEW Tacoma Students Retained to 2nd fall qtr	63	60	75	71	65	71	89	69	56	66	79	57	77	69	68	56	50	51
Retention rate to 2nd fall quarter	86%	86%	81%	81%	88%	88%	84%	88%	78%	86%	93%	92%	86%	86%	86%	84%	91%	85%
*Retention adjusted for graduation.																		
Graduation Rate for Entering Tacoma Cohort	Degree by summer 00	Degree by summer 01	Degree by summer 02	Degree by summer 03	Degree by summer 04	Degree by summer 05	Degree by summer 06	Degree by summer 07	Degree by summer 08	Degree by summer 09	Degree by summer 10	Degree by summer 11	Degree by summer 12	Degree by summer 13	Degree by summer 14	Degree by summer 15	Degree by summer 16	Degree by summer 17
	# of New Tacoma cohort who earned degree within 2 yrs	60	56	63	65	57	61	78	53	45	45	67	39	62	63	56	48	37
	Graduation rate within 2 years	82%	80%	68%	74%	77%	75%	74%	68%	63%	58%	79%	63%	69%	79%	71%	72%	67%
# of New Tacoma cohort who earned degree within 3 yrs	Degree by summer 01	Degree by summer 02	Degree by summer 03	Degree by summer 04	Degree by summer 05	Degree by summer 06	Degree by summer 07	Degree by summer 08	Degree by summer 09	Degree by summer 10	Degree by summer 11	Degree by summer 12	Degree by summer 13	Degree by summer 14	Degree by summer 15	Degree by summer 16	Degree by summer 17	Degree by summer 18
	# of New Tacoma cohort who earned degree within 3 yrs	61	57	73	71	61	66	89	59	49	54	74	54	72	67	66	53	
	Graduation rate within 3 years (cumulative)	84%	81%	78%	81%	82%	81%	84%	76%	68%	70%	87%	87%	80%	84%	84%	79%	
# of New Tacoma cohort who earned degree within 4 yrs	Degree by summer 02	Degree by summer 03	Degree by summer 04	Degree by summer 05	Degree by summer 06	Degree by summer 07	Degree by summer 08	Degree by summer 09	Degree by summer 10	Degree by summer 11	Degree by summer 12	Degree by summer 13	Degree by summer 14	Degree by summer 15	Degree by summer 16	Degree by summer 17	Degree by summer 18	Degree by summer 19
	# of New Tacoma cohort who earned degree within 4 yrs	61	57	74	71	61	67	89	62	51	56	76	54	73	68	67		
	Graduation rate within 4 years (cumulative)	84%	81%	80%	81%	82%	83%	84%	79%	71%	73%	89%	87%	81%	85%	85%		
# of New Tacoma cohort who earned degree within 5 yrs	Degree by summer 03	Degree by summer 04	Degree by summer 05	Degree by summer 06	Degree by summer 07	Degree by summer 08	Degree by summer 09	Degree by summer 10	Degree by summer 11	Degree by summer 12	Degree by summer 13	Degree by summer 14	Degree by summer 15	Degree by summer 16	Degree by summer 17	Degree by summer 18	Degree by summer 19	Degree by summer 20
	# of New Tacoma cohort who earned degree within 5 yrs	62	57	76	71	62	69	89	64	52	57	76	54	73	68			
	Graduation rate within 5 years (cumulative)	85%	81%	82%	81%	84%	85%	84%	82%	72%	74%	89%	87%	81%	85%			
# of New Tacoma cohort who earned degrees to date*	Degree by summer 16	Degree by summer 16	Degree by summer 16	Degree by summer 16	Degree by summer 16	Degree by summer 16	Degree by summer 16	Degree by summer 16	Degree by summer 16	Degree by summer 16	Degree by summer 16	Degree by summer 16	Degree by summer 16	Degree by summer 16				
	# of New Tacoma cohort who earned degrees to date*	64	60	78	73	62	70	89	64	52	61	76	54	73				
	Total Graduation rate (cumulative)	88%	86%	84%	83%	84%	86%	84%	82%	72%	79%	89%	87%	81%				

\*Retention and Graduation data (AW only) updated as of 1/5/17.

**Tacoma Program**  
**Historical Fall Quarter Enrolled Student Demographics**  
**Fall 1992 - Fall 2009**



Fall Quarter	1992	1993	1994	1995	1996	1997	1998	1999	2000	2001	2002	2003	2004	2005	2006	2007	2008	2009
Undergraduate Headcount	114	112	97	128	137	173	156	153	181	187	184	203	231	213	206	180	201	214
Male	37 32%	37 33%	25 26%	25 20%	34 25%	45 26%	43 28%	40 26%	47 26%	44 24%	47 26%	57 28%	70 30%	55 26%	49 24%	48 27%	52 26%	55 26%
Female	77 68%	75 67%	72 74%	103 80%	103 75%	128 74%	113 72%	113 74%	134 74%	143 76%	137 74%	146 72%	161 70%	158 74%	157 76%	132 73%	149 74%	159 74%
African American	49 43%	52 46%	44 45%	57 45%	65 47%	78 45%	69 44%	60 39%	72 40%	66 35%	66 36%	85 42%	92 40%	95 45%	78 38%	74 41%	72 36%	77 36%
Asian/Pacific Islander	4 4%	1 1%	1 1%	7 5%	3 2%	3 2%	12 8%	11 7%	8 4%	16 9%	12 7%	12 6%	12 5%	11 5%	9 4%	7 4%		
Asian																	9 4%	6 3%
Pacific Islander																	0 0%	2 1%
Hispanic/Latino	1 1%	5 4%	4 4%	12 9%	8 6%	11 6%	7 4%	8 5%	14 8%	15 8%	19 10%	15 7%	8 3%	11 5%	16 8%	8 4%	6 3%	10 5%
Native American/ Alaska Native	7 6%	5 4%	4 4%	8 6%	11 8%	7 4%	5 3%	8 5%	9 5%	8 4%	9 5%	13 6%	17 7%	8 4%	8 4%	7 4%	9 4%	7 3%
White	46 40%	46 41%	38 39%	35 27%	39 28%	66 38%	52 33%	58 38%	71 39%	73 39%	67 36%	63 31%	83 36%	72 34%	76 37%	57 32%	77 38%	91 43%
Not Indicated/Unknown	7 6%	3 3%	6 6%	9 7%	11 8%	8 5%	11 7%	8 5%	7 4%	9 5%	11 6%	15 7%	19 8%	16 8%	19 9%	27 15%	28 14%	21 10%
<b>Students of Color (subtotal)</b>	<b>61 54%</b>	<b>63 56%</b>	<b>53 55%</b>	<b>84 66%</b>	<b>87 64%</b>	<b>99 57%</b>	<b>93 60%</b>	<b>87 57%</b>	<b>103 57%</b>	<b>105 56%</b>	<b>106 58%</b>	<b>125 62%</b>	<b>129 56%</b>	<b>125 59%</b>	<b>111 54%</b>	<b>96 53%</b>	<b>96 48%</b>	<b>102 48%</b>



Fall Quarter	1992	1993	1994	1995	1996	1997	1998	1999	2000	2001	2002	2003	2004	2005	2006	2007	2008	2009
Average Age	38	40	38	38	39	39	39	38	46	40	39	38	37	38	39	38	38	38
Non-traditional Age (24 or older)	107 94%	107 96%	94 97%	122 95%	130 95%	167 97%	141 90%	141 92%	171 94%	179 96%	163 89%	178 88%	200 87%	197 92%	195 95%	167 93%	182 91%	200 93%
Washington Residents	112 98%	110 98%	96 99%	124 97%	137 100%	173 100%	155 99%	153 100%	178 98%	186 99%	184 100%	201 99%	228 99%	213 100%	206 100%	180 100%	196 98%	212 99%
Nonresidents	2 2%	2 2%	1 1%	4 3%	0 0%	0 0%	1 1%	0 0%	3 2%	1 1%	0 0%	2 1%	3 1%	0 0%	0 0%	0 0%	5 2%	2 1%
Below Federal Poverty Level										118 63%	107 58%	122 60%	145 63%	142 67%	134 65%	123 68%	130 65%	150 70%
First Generation Baccalaureate (per FAFSA or application)										100 53%	86 47%	93 46%	105 45%	88 41%	71 34%	65 36%	97 48%	123 57%
Disability (reported)										7 4%	15 8%	11 5%	22 10%	19 9%	15 7%	12 7%	20 10%	24 11%
Veterans										18 10%	13 7%	10 5%	11 5%	11 5%	5 2%	5 3%	8 4%	7 3%
New Students (Degree-seeking)	56 49%	47 42%	41 42%	60 47%	71 52%	73 42%	73 47%	70 46%	92 51%	88 47%	74 40%	81 40%	106 46%	78 37%	72 35%	77 43%	85 42%	62 29%
Continuing Students (Degree-seeking)	56 49%	65 58%	54 56%	67 52%	61 45%	97 56%	76 49%	80 52%	86 48%	96 51%	110 60%	120 59%	124 54%	134 63%	133 65%	99 55%	116 58%	152 71%
Special (Not Matriculated)	2 2%	0 0%	2 2%	1 1%	5 4%	3 2%	7 4%	3 2%	3 2%	3 2%	0 0%	2 1%	1 0%	1 0%	1 0%	4 2%	0 0%	0 0%
Full-time (12-20 credits)	111 97%	109 97%	89 92%	127 99%	131 96%	170 98%	145 93%	149 97%	176 97%	185 99%	181 98%	197 97%	229 99%	208 98%	198 96%	175 97%	195 97%	210 98%
Part-time (Less than 12 credits)	3 3%	3 3%	8 8%	1 1%	6 4%	3 2%	11 7%	4 3%	5 3%	2 1%	3 2%	6 3%	2 1%	5 2%	8 4%	5 3%	6 3%	4 2%
<b>Fall Credit Hour Detail</b>	<b>1992</b>	<b>1993</b>	<b>1994</b>	<b>1995</b>	<b>1996</b>	<b>1997</b>	<b>1998</b>	<b>1999</b>	<b>2000</b>	<b>2001*</b>	<b>2002</b>	<b>2003</b>	<b>2004</b>	<b>2005**</b>	<b>2006</b>	<b>2007</b>	<b>2008</b>	<b>2009</b>
2-4 credits	2	1	3	1	0	2	5	1	2	0	0	0	0	1	5	0	1	0
5-8 credits	1	2	2	0	5	1	4	2	3	1	3	3	1	0	1	2	4	2
9-11 credits	0	0	3	0	1	0	2	1	0	1	0	3	1	4	2	3	1	2
12-15 credits	0	0	4	1	0	2	3	1	0	1	7	6	3	16	25	20	31	31
16 credits	111	109	85	126	131	168	142	148	176	179	172	184	218	175	158	141	149	154
17-18 credits	0	0	0	0	0	0	0	0	0	5	1	3	2	9	10	6	11	15
19-20 credits	0	0	0	0	0	0	0	0	0	0	1	4	6	8	5	8	4	10
<b>% at 16 or more credits</b>	<b>97%</b>	<b>97%</b>	<b>88%</b>	<b>98%</b>	<b>96%</b>	<b>97%</b>	<b>91%</b>	<b>97%</b>	<b>97%</b>	<b>98%</b>	<b>95%</b>	<b>94%</b>	<b>98%</b>	<b>90%</b>	<b>84%</b>	<b>86%</b>	<b>82%</b>	<b>84%</b>

\* Fall 2001 was the first quarter in which matriculated Evergreen undergraduates could register for 17-20 credits per quarter.

\*\* Fall 2005 was the first quarter in which Tacoma students began registering for each module (course section) of the Tacoma curriculum separately.