

The Evergreen State College
Evergreen Student Experience Survey 2011
Olympia Campus Random Sample

Ability to Enroll in First Choice of Academic Offerings

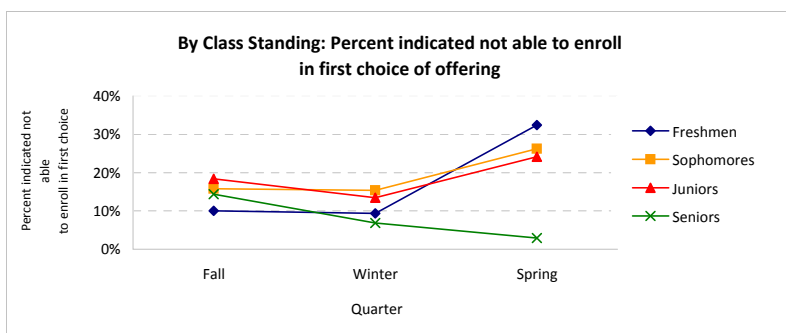
Students were asked to indicate whether they were able to enroll in their first choice of academic offerings. The percent of Olympia campus respondents who indicated that they could not enroll in their first choice of academic offerings ranged from a low of 10% in winter to a high of 15.9% in spring 2011.

Were you able to enroll in your first choice of offering...?

	Fall (N=260)	Winter (N=270)	Spring (N=301)
Yes	85.0%	90.0%	84.1%
No	15.0%	10.0%	15.9%
Missing*	43	33	2

*Students were recoded as missing if they said that they transferred in winter or spring quarter, or were otherwise not enrolled for that particular quarter.

The following chart shows the percentage by class standing of Olympia campus respondents unable to enroll in their first-choice offering by class standing as of spring quarter 2011. Overall, seniors were less likely to report difficulty with enrolling in their first choice, with 3.0% to 14.4% reporting that they did not get into their first choice. Freshmen had the highest percentage of respondents unable to enroll in their first choice in spring (32%) and the lowest percentage in fall (10%).



By class standing: Were you able to enroll in your first choice of offering...? Percent indicated "No"

	Fall	Winter	Spring
Freshmen	10.0%	9.4%	32.4%
Sophomores	15.8%	15.4%	26.2%
Juniors	18.3%	13.4%	24.1%
Seniors	14.4%	6.8%	3.0%

First Choice Preference

Students were asked to indicate their preference if they were not able to enroll in their first choice of academic offering. The following tables show comments by quarter. Specific first-choice programs and courses and relevant comments are grouped by type to make it easier to summarize. Some comments can include items that belong to more than one planning unit.

Fall Quarter

If no, I would have preferred:

Planning Unit*	Individual Comments
Culture, Text, and Language (4)	Language and Power
	[...] though Russia and Eurasia was extremely interesting, it was also very difficult.
	Russian
	Age of Irony
Environmental Studies (5)	Practice of Sustainable Agriculture
	Practice of Sustainable Agriculture
	Field Ecology
	Field Ecology
	Field Ecology, however truly enjoyed my second choice--lasive Species: Plants and Patterns.
Expressive Arts (2)	Media works
	Media works
Scientific Inquiry (3)	Something in the computer sciences field
	In coming to Evergreen I was under the impression that the 1 year program of Marine Life was going to be offered and as it was not offered the last year, I was told it would be offered this year. It was not. There was also a lack in upper division science classes, so I HAD to resort to taking an internship and creating a contract.
	General Chemistry or Statistics
Inter-area (5)	Sustainability from the inside out (ES, CS)
	Sustainability from the inside out (ES, CS)
	Law and Literature: Revolution to Reconstruction (SPBC, CTL)
	Mount Rainier (ES, EA)
	Animal Behavior and Zoology (ES, CS)
Society, Politics, Behavior, and Change (5)	Health and Human Development
	Business Foundation. I had emailed the professor in April of 2010 (while in Vietnam), yet two weeks
	Anything in social psychology, developmental psychology, cognitive psychology, etc. (every class is full 2 seconds after registration time ticket opens)
	ANY psychology class
	Abnormal psych child development
Consciousness Study (1)	Music & Consciousness
Other Comments (7)	The Evergreen website was not updated. I put in last years CRN number. Quite frustrating.
	Second choice worked out for the best.
	Preferred partial program, but refused by faculty
	No programs appealed to me
	My first choice
	I'm on the waitlist
	Anything. I was waitlisted for everything.

CTL=Culture, Text and Language; ES=Environmental Studies; EWS=Evening and Weekend Studies; EA=Expressive Arts; CS=Consciousness Study; SPBC=Society, Politics, Behavior, and Change; SI=Scientific Inquiry; IA=Inter-Area; CORE=Core program

* Numbers in parentheses indicate the number of students who had comments related to this category.

Winter Quarter

If no, I would have preferred:

Planning Unit*	Individual Comments
Culture, Text and Language (6)	Art and Writing classes
	Sign Language
	Dada and Surrealism
	Dada and Surrealism
	Dada and Surrealism
	To stay in my fall quater class by spanish was only offered on two nights.
Environmental Studies (1)	Botany: Plants and People. I was unable to register in the fall; the class had filled before my ticket.
Expressive Arts (8)	Designing Musical Instruments with Bob Woods
	Figurative Drawing
	have taken Nature/Image. My first choice was to take Nature/Image but do to limited space in the program I was not able to get in.
	I needed a student learning contract in fine art, or more fine art course offerings on evenings/weekends
	Media works
	or another class like it! Figure drawing
	Metal working, ceramics, sculpture
	Neon: Shaping Light
Independent Learning Contract (1)	I needed a student learning contract in fine art
Scientific Inquiry (4)	Chemistry for everyone
	Medicinal Botany
	Medicinal Botany
	Nutrition
Inter-area (2)	Designing Green (SI, EA, ES)
	a program mixing science and art
Society, Politics, Behavior and Change (5)	Abnormal psych child development
	ANY psychology class
	Anything in social psychology, developmental psychology, cognitive psychology, etc. (every class is full 2 seconds after registration time ticket opens)
	One of the business classes
	SOS: Entrepreneurship and Sustainable Business Management
Other Comments (2)	A new class that wasn't put on the catalog
	No programs appealed to me

CTL=Culture, Text and Language; ES=Environmental Studies; EWS=Evening and Weekend Studies; EA=Expressive Arts; NAWIP=Native American and World Indigenous Peoples; SPBC=Society, Politics, Behavior, and Change; SI=Scientific Inquiry; IA=Inter-Area; CORE=Core program

* Numbers in parentheses indicate the number of students who had comments related to this category.

Spring Quarter

If no, I would have preferred:

Planning Unit	Individual Comments
Culture, Text, and Language (5)	How Poetry Saves The World
	The World beyond the grotesque
	There are not nearly enough writing classes offered during the evening hours. I was able to get into one, but the other classes offered are far below my abilities and frankly, seem to be a waste of time. Very frustrating.
	Time and Works of Soseki, Mishima and Murakami.
	Writing in the wild
Environmental Studies (5)	Botany
	I was hoping to continue on with Field Ecology [...]
	Medicinal Botany
	Medicinal Botany, or another class like it!
	Medicinal botany
Expressive Arts (14)	Ballet
	Camera One: We're Live
	Drawing Animals
	Furniture Design
	I love my independent study, although I hoped to take an art class or a dance class as well. All of the classes/wait-lists were full by my registration time.
	I was hoping to continue on with [...] as well as taking the two credit neon art class since I haven't had much time for art due to fulfilling requirements to get me through the sciences.
	Metal or wood working, there are not nearly enough arts programs offered here
	Metal working, ceramics, sculpture
	Metalworking!
	Metal working with Bob Woods or Furniture making
	Ready Camera One
	Ready Camera One; We're Live
	Woodworking and metal working
	Woodworking
Scientific Inquiry (5)	All chemistry or science classes
	statistics
	Nutrition
	Statistics
	Thinking Staright
Inter-area (3)	Camera One: We're Live
	Looking at Animals (EA, CTL)
	A program mixing science and art
Society, Politics, Behavior and Change (13)	A full-time business offering.
	Abnormal psych child development
	Abnormal Psychology
	ANY psychology class
	Anything in social psychology, developmental psychology, cognitive psychology, etc. (every class is full 2 seconds after registration time ticket opens)
	So You Want to be a Psychologist, Abnormal Psychology
	Financial Heartland
	Group Dynamics & Workplace Psychology
	I would have preferred Abnormal Psychology and a 12 credit course.
	so you want to be a therapist
	So You Want to be A Psychologist
	So You Want to be A Psychologist
	Abnormal psychology
Other Comments (7)	Anything
	Anything. There was literally no room for me. I mean, there were two programs that had space left. But how is it fair that I was only given two options. So, last minute, I made an ILC.
	Because there's not much to choose from on thursday which is a day i'd prefer to take classes.
	By the time my ticket was available, All nights and weekend classes were waitlist full. I got waitlisted on only one and that's the class I got.
	Eventually I was able to enroll but it was a long struggle
	I got my 4th choice
	I had a family emergency so it only made sense that I would not get my first choice.

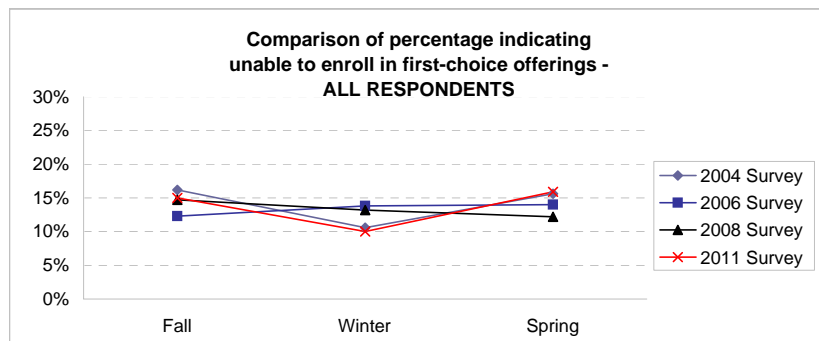
CTL=Culture, Text and Language; ES=Environmental Studies; EWS=Evening and Weekend Studies; EA=Expressive Arts; NAWIP=Native American and World Indigenous Peoples; SPBC=Society, Politics, Behavior, and Change; SI=Scientific Inquiry; IA=Inter-Area; CORE=Core program

* Numbers in parentheses indicate the number of students who had comments related to this category.

Ability to Enroll in First Choice of Academic Offerings

Comparisons between 2004, 2006, 2008 and 2011 Student Experience Surveys

The charts below show the percentage of respondents who were unable to enroll in their first-choice academic offering, comparing responses to the Evergreen Student Experience Surveys 2004, 2006, 2008 and 2011. The percentage of students who reported that they were not able to enroll in their first choice was higher in spring 2011 and lower in winter than all the previous surveys. The percentage of students unable to enroll in their first choice in fall had increased from 12.3% in 2006 to 15% in 2011, but did not reach its peak of 2004 (16.2%).

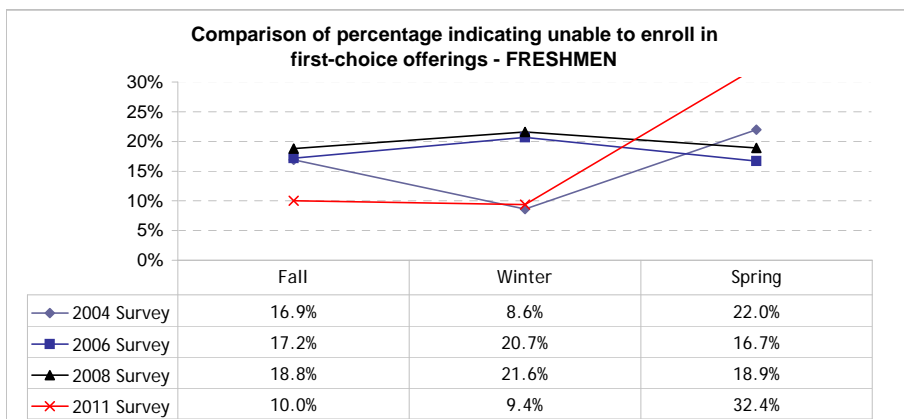


Longitudinal Comparison of Student Experience Survey Data - ALL RESPONDENTS

	N*	Fall	Winter	Spring
2004 Survey	528	16.2%	10.6%	15.6%
2006 Survey	386	12.3%	13.8%	14.0%
2008 Survey	330	14.7%	13.2%	12.2%
2011 Survey	303	15.0%	10.0%	15.9%

NOTE: Difference in numbers between 2004 and 2006 due to change in sampling procedures to make 2006 sample more representative of the student body.

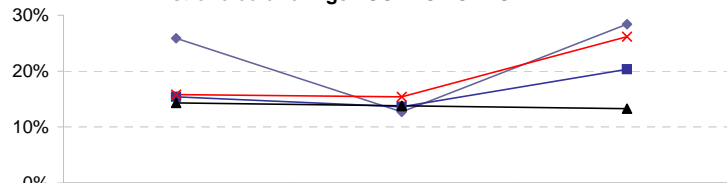
The charts below show additional longitudinal comparisons for respondents within each class standing.



Ability to Enroll in First Choice of Academic Offerings

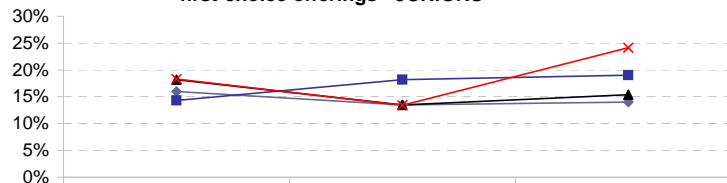
Comparisons between 2004, 2006, 2008 and 2011 Student Experience Surveys (cont'd)

Comparison of percentage indicating unable to enroll in first-choice offerings - SOPHOMORES



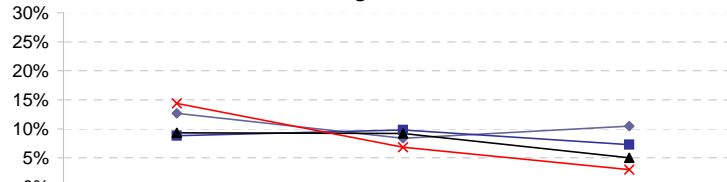
	Fall	Winter	Spring
2004 Survey	25.9%	12.7%	28.4%
2006 Survey	15.4%	13.6%	20.3%
2008 Survey	14.3%	13.8%	13.3%
2011 Survey	15.8%	15.4%	26.2%

Comparison of percentage indicating unable to enroll in first-choice offerings - JUNIORS



	Fall	Winter	Spring
2004 Survey	16.0%	13.5%	14.0%
2006 Survey	14.3%	18.2%	19.0%
2008 Survey	18.2%	13.5%	15.4%
2011 Survey	18.3%	13.4%	24.1%

Comparison of Percentage indicating unable to enroll in first-choice offerings - SENIORS



	Fall	Winter	Spring
2004 Survey	12.7%	8.4%	10.5%
2006 Survey	8.8%	9.8%	7.3%
2008 Survey	9.3%	9.2%	5.0%
2011 Survey	14.4%	6.8%	3.0%