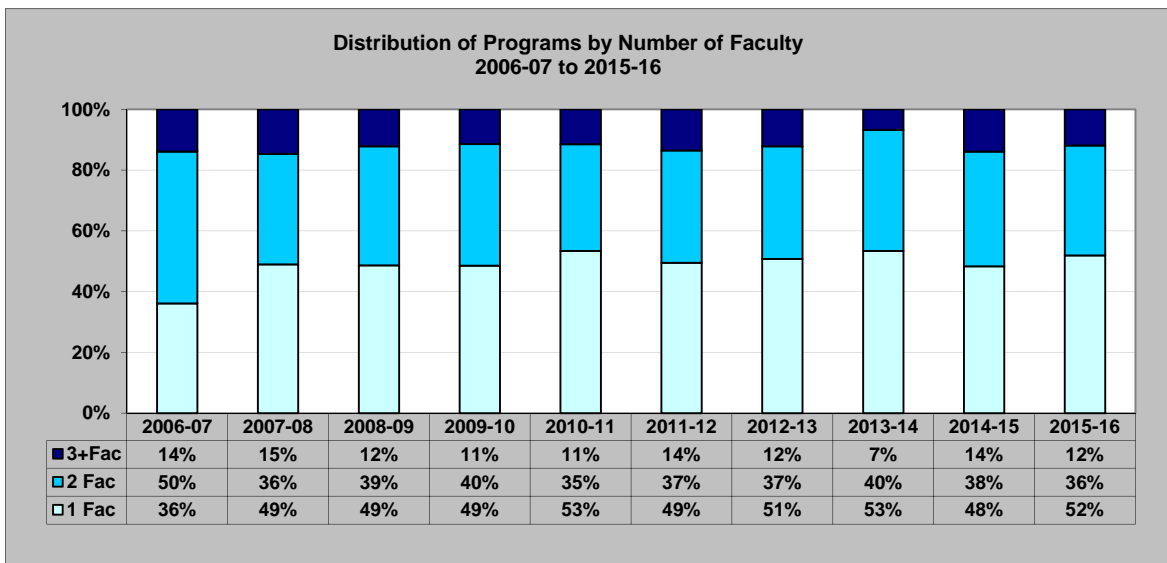
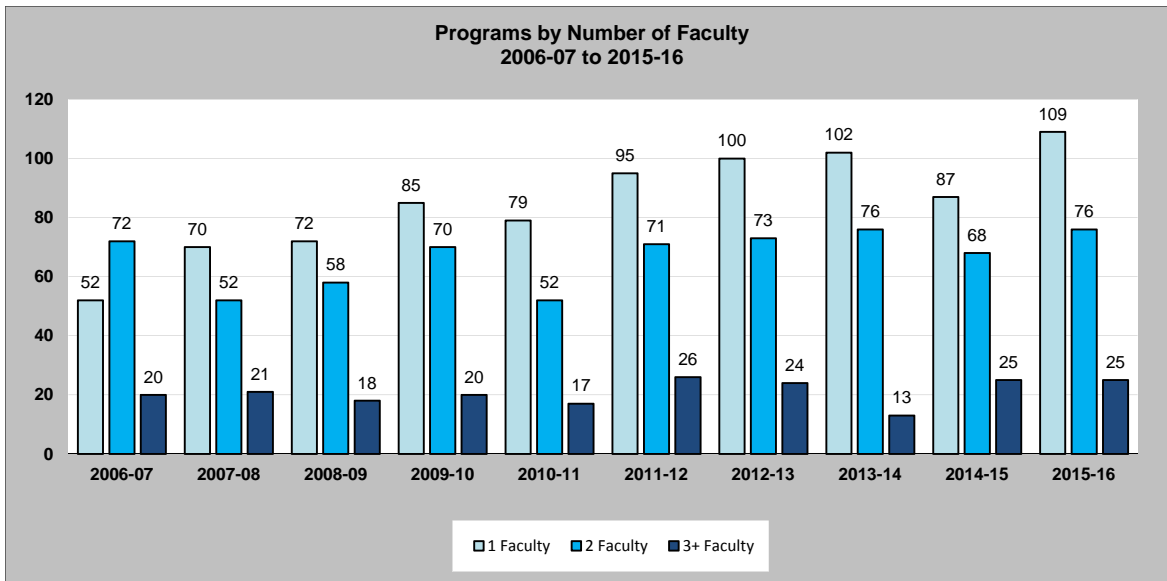


### Programs by Number of Faculty 2006-07 to 2015-16 (Excludes Tacoma)

The table and charts below detail the trend in the number of faculty teaching in programs from 2006 to 2016. The second chart shows that since 2007-08 about half of all programs were taught by one faculty. It should be noted that the number of single faculty programs returned to its high point in 2013-14 at 53%. The increase in single faculty programs was coupled with the decrease in two-faculty teams. In 2015-16, the percentage of single faculty programs increased by 4% compared to the previous year, and the percentage of three or more faculty programs decreased by 2%.

#### Programs by Number of Faculty:

	1 Faculty	2 Faculty	3+ Faculty
2006-07	52	72	20
2007-08	70	52	21
2008-09	72	58	18
2009-10	85	70	20
2010-11	79	52	17
2011-12	95	71	26
2012-13	100	73	24
2013-14	102	76	13
2014-15	87	68	25
2015-16	109	76	25

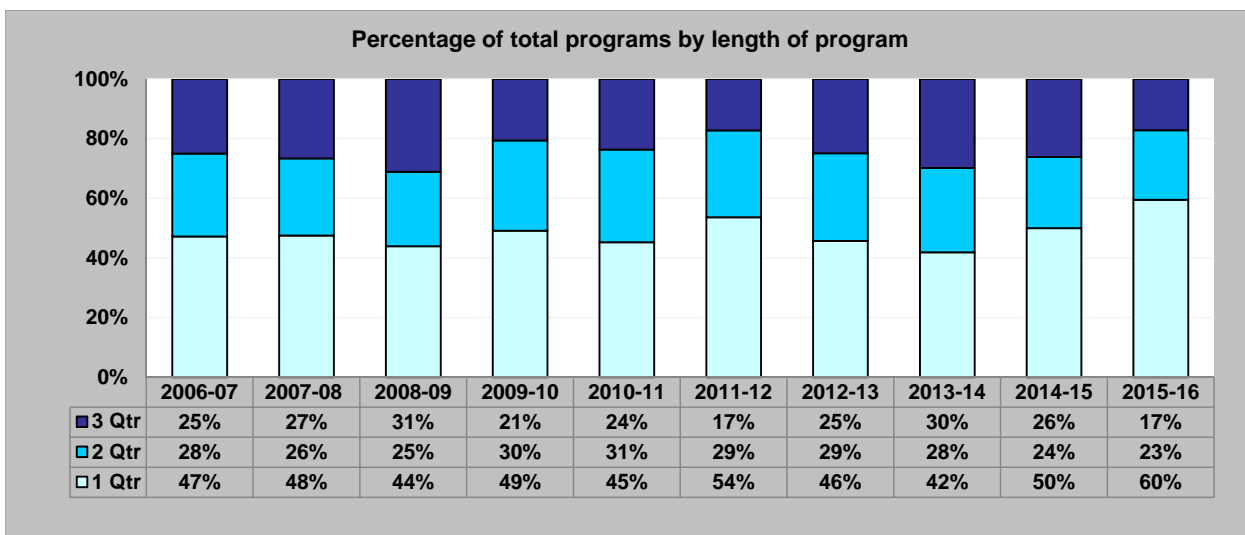
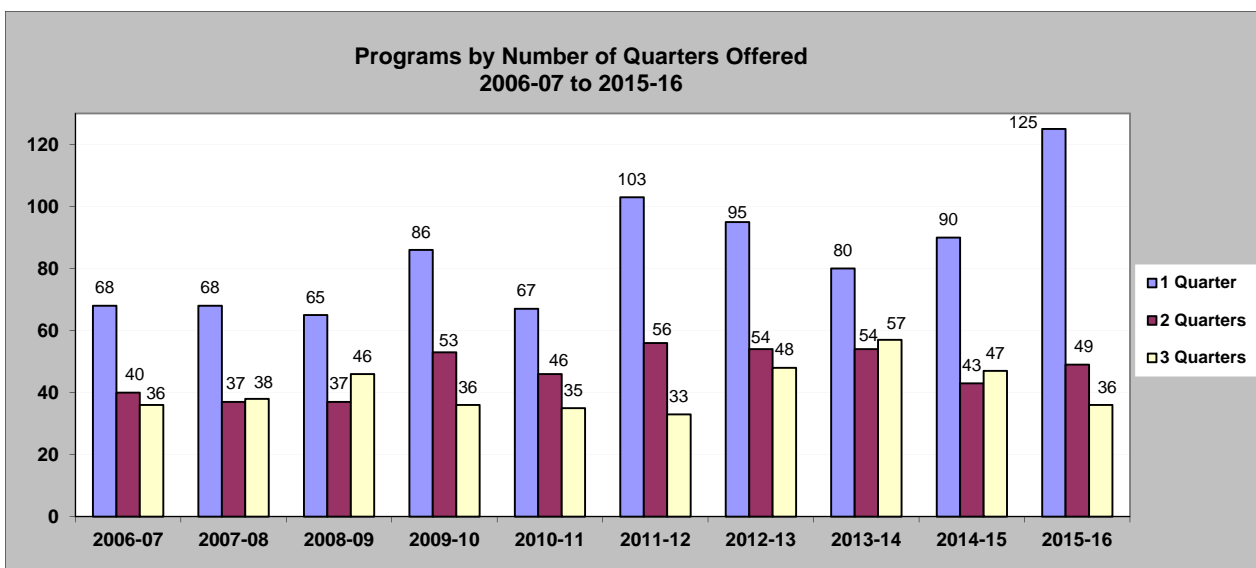


### Programs by Quarters Offered (Olympia, Tribal and Grays Harbor)

The tables and chart below describe the trend of the number of quarters programs were offered, the quarters in which they were taught, and the number of seats available per quarter from 2006-07 to 2015-16. In 2015-16, the proportion of One-quarter programs was at its highest percentage ever with 60%. The increase of one-quarter programs is coupled with the decrease in the proportion of three-quarter programs.

#### Programs by number of quarters offered:

	1 Quarter	2 Quarters	3 Quarters	Total Prog.
2006-07	68	40	36	<b>144</b>
2007-08	68	37	38	<b>143</b>
2008-09	65	37	46	<b>148</b>
2009-10	86	53	36	<b>175</b>
2010-11	67	46	35	<b>148</b>
2011-12	103	56	33	<b>192</b>
2012-13	95	54	48	<b>197</b>
2013-14	80	54	57	<b>191</b>
2014-15	90	43	47	<b>180</b>
2015-16	125	49	36	<b>210</b>

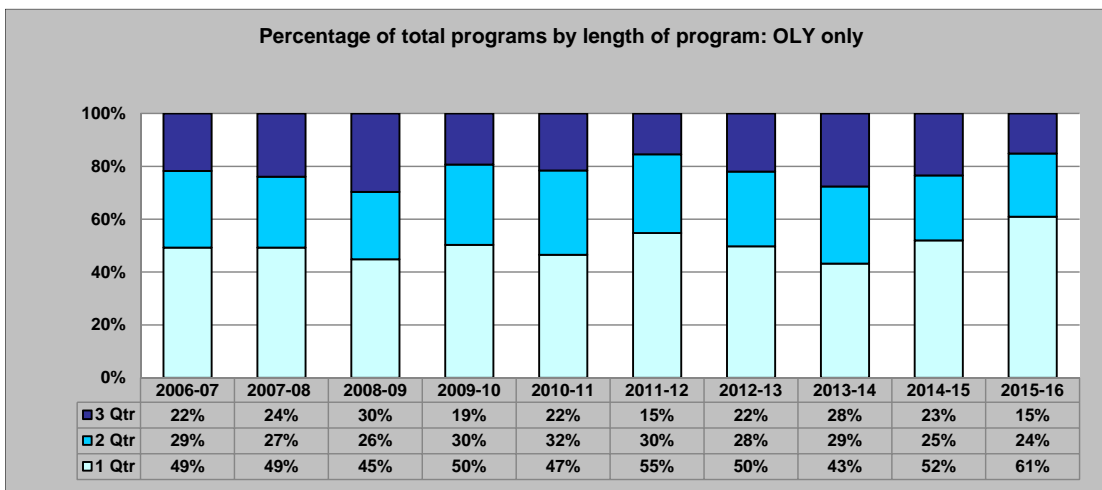
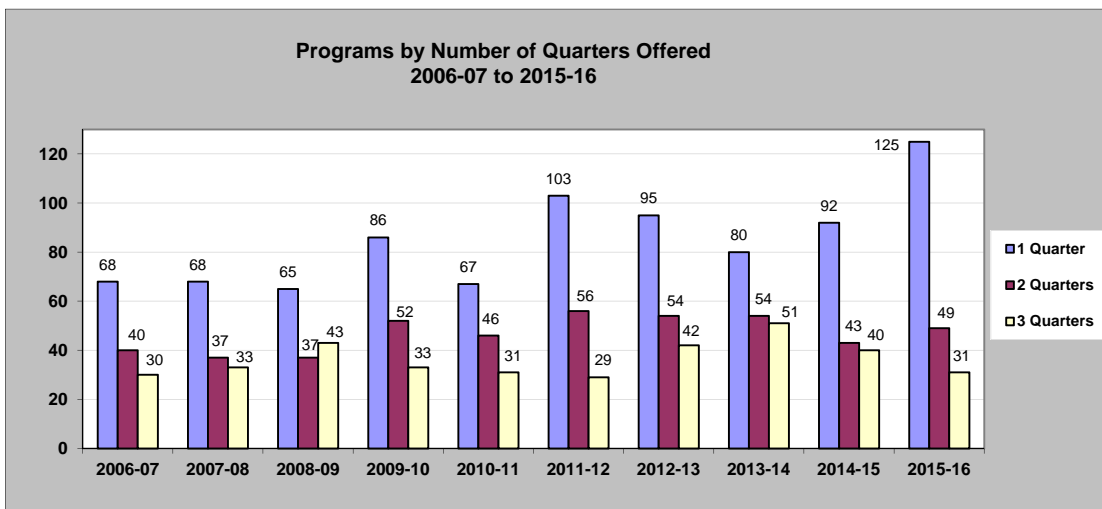


### Programs by Quarters Offered (Olympia only)

The tables below describe the trend of the number of quarters programs were offered, the quarters in which they were taught, and the number of seats available per quarter from 2006-07 to 2015-16. In 2015-16, the one-quarter programs was at its highest point ever. The proportions of two-quarter programs was at its lowest point in the last ten years. Note that Reservation-based programs and Tacoma campus were not included in this analysis.

#### Programs by number of quarters offered:

	1 Quarter	2 Quarters	3 Quarters	Total Prog.
2006-07	68	40	30	<b>138</b>
2007-08	68	37	33	<b>138</b>
2008-09	65	37	43	<b>145</b>
2009-10	86	52	33	<b>171</b>
2010-11	67	46	31	<b>144</b>
2011-12	103	56	29	<b>188</b>
2012-13	95	54	42	<b>191</b>
2013-14	80	54	51	<b>185</b>
2014-15	92	43	40	<b>175</b>
2015-16	125	49	31	<b>205</b>



Quarters in which programs were offered (Olympia only)

Number of programs available per quarter:

	Fall	Winter	Spring
2006-07	19	12	37
	30		
		10	
		30	
2007-08	15	9	44
	30		
		7	
		33	
2008-09	15	9	41
	27		
		10	
		43	
2009-10	23	10	52
	42		
		11	
		33	
2010-11	26	9	32
	36		
		10	
		31	
2011-12	21	17	65
	51		
		5	
		29	
2012-13	16	18	61
	45		
		9	
		42	
2013-14	17	12	51
	37		
		17	
		51	
2014-15	26	17	49
	28		
		15	
		40	
2015-16	34	29	62
	38		
		11	
		31	

Number of seats available per quarter:

	Fall	Winter	Spring
2006-07	718	362	1365
	1284	1258	
		412	412
	1460	1430	1318
2007-08	443	223	1444
	1350	1305	
		292	292
	1518	1469	1375
2008-09	491	243	1283
	1246	1256	
		390	390
	1898	1865	1728
2009-10	773	287	1782
	1586	1586	
		464	464
	1490	1462	1346
2010-11	783	242	996
	1465	1440	
		383	383
	1614	1590	1421
2011-12	688	508	2263
	2066	2024	
		189	189
	1330	1267	1145
2012-13	504	500	1953
	1782	1727	
		249	252
	1377	1325	1268
2013-14	716	367	1581
	1357	1354	
		528	528
	1404	1344	1248
2014-15	788	470	1660
	1237	1147	
		435	417
	1373	1357	1134
2015-16	1118	787	2041
	1391	1353	
		412	412
	1029	989	881