

CLUC Minutes 10/20/2014

Attendees: Rich Davis, Mark Kormondy, Robyn Herring, Jeanne Rynne, David McAvity, Anthony Tindill, Bob Leverich, Mark Lacina

Guests: Erin Genia, John Paul Jones, Colleen Thorpe, David Shellman, Micah McCarty

Recorder: Bianca Janssen-Timmen

Meeting started at 3:05pm

Minutes from 08/18/2014 were approved as presented.

Introductions

1.) Indigenous Arts Campus (IAC) Overview and Update – Erin Genia, Colleen Thorpe and John Paul Jones

Erin, Colleen and John Paul gave an update on the Master Plan of the future 7.25 acre Indigenous Arts Campus with its extension of an existing building and outdoor spaces, such as an addition to the Longhouse, a possible use of one floor in Sem1, an extension of the Ethno-Botanical Garden, a large event gathering space, and several small parking spaces. The add-on to the Longhouse will serve as gallery and the possible use of Sem1 will be for studio spaces. In addition they proposed three new buildings: a Glass Studio, an additional Wood Carving Studio, and a Fiber Arts Studio.

The first construction project will be a combined Maori/PNW longhouse style Weaving Studio. After a redesign the Fiber Arts Studio's square footage was decreased from ca. 3000 square foot to 2100 square foot. The building will be located north of the Longhouse and will contain an entry porch and a covered drying porch on the back, a gallery with seating, a teaching space, a dye kitchen, office, storage and restrooms.

The outside walls will not be load-bearing and will allow the use of large glass doors on the north and south side of the teaching space.

After January 1st, Jones & Jones Architects and the Longhouse, are planning on starting the design process.

In the further discussion the CLUC members mentioned that taking down trees might spark some concern on campus. Erin explained that they considered this issue and the Master Plan is designed in such a way that as little trees as possible will be affected and the life cycle of the trees is taken into consideration, as well as using the wood in the building structure itself or in IAC related art projects.

The Master Plan presentation with specifics of the IAC is attached.

The CLUC recommends the approval of the Indigenous Art Campus Master Plan and the construction of the Fiber Art Studio to John Hurley.

2.) German Shepard Search Dogs (GSSD) – Bianca Janssen-Timmen

James Collins contacted the CLUC regarding accessing TESC for their annual SAR canine training on December 20th from 8:00am to 5:00pm.

December 20th is a Saturday and the beginning of winter break. Not many students are expected to be on campus on that day.

The GSSD has been conducting this training since 2010 and it has been very helpful as the campus facility's mix of woods and buildings mimic an urban-like response for lost subjects with dementia.

The CLUC will inform the campus police and dispatch of the groups visit.

The CLUC recommends approval of the training to John Hurley.

3.) Smoking Shelter Removal or Relocation – Jeanne Rynne

The Vice-Presidents tasked Facilities to come up with a new plan for smoking shelter locations that moved shelters away from the campus core and highly used pedestrian areas. The CLUC proposed that the smoking shelter by the Carving Studio remain, the one behind the CAB in front of the CRC should remain but be changed to a non-smoking shelter, and two smoking shelters should be relocated to behind the CUP and behind the library.

4.) Dog Park – Mark Lacina

Mark pointed out that the number of students with dogs is growing and he would like to suggest a dog park on campus.

The CLUC informed Mark that Bob Leverich proposed a dog park in October 2012 and it was discussed but not recommended to John Hurley for approval. Topics that have been discussed were:

- a. Parking space
- b. Noise levels in regard to the close proximity of the Child Care Center
- c. Usage
- d. Different sites on campus (proposed Archery Range and Driftwood House site)
- e. The possibility of Evergreen being a potential permanent site
- f. Liability

Mark mentioned that dogs run loose around campus and it might be a better solution to create an official dog run area in order to control off leash dogs as well as dog feces that are left for Grounds to pick up.

Partnering up with the City of Olympia could be a great community partnership opportunity and might even offset some of the park's costs and maintenance.

Jeanne said she would talk to John Hurley and find out the past history of this issue and will follow-up at the next CLUC meeting.

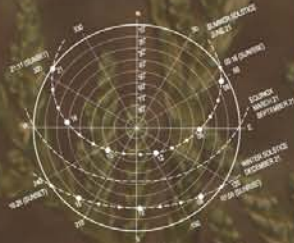
The meeting ended at 4:45pm.

The next meeting will be November 17, 2014

(Attachment of IAC in PDF format is separate)

INDIGENOUS ARTS CAMPUS AT TESC

*"getting ready
for people
to come"*



North Reserve
189 acres

Core 190 acres

West Reserve
170 acres



**INDIGENOUS
ARTS CAMPUS**

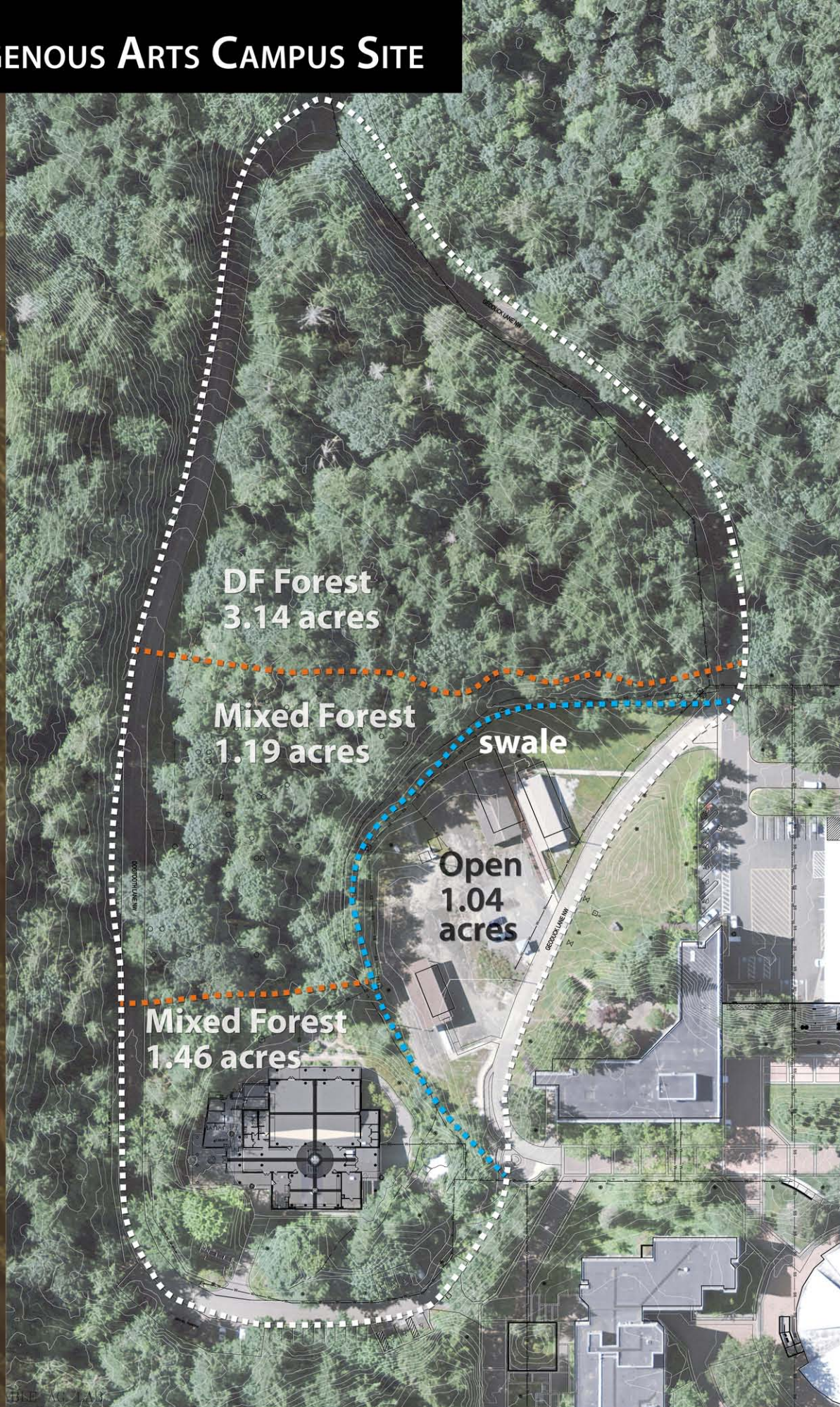
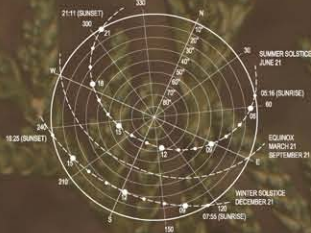
JONES JONES
ARCHITECTS
LANDSCAPE ARCHITECTS
PLANNERS

OCTOBER 2014



INDIGENOUS ARTS CAMPUS SITE

*"getting ready
for people
to come"*



INDIGENOUS
ARTS CAMPUS

JONES JONES
ARCHITECTS
LANDSCAPE ARCHITECTS
PLANNERS

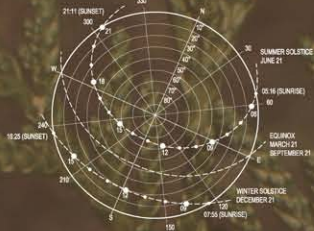
OCTOBER 2014

SCALE: 1" = 30'
0 10 20 30 40



INDIGENOUS ARTS CAMPUS MASTER PLAN

*"getting ready
for people
to come"*



INDIGENOUS
ARTS CAMPUS

JONES JONES
ARCHITECTS
LANDSCAPE ARCHITECTS
PLANNERS

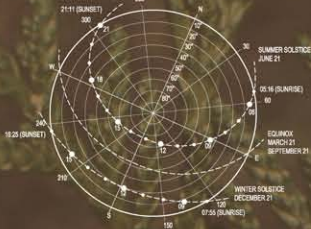
OCTOBER 2014

SCALE: 1" = 30'



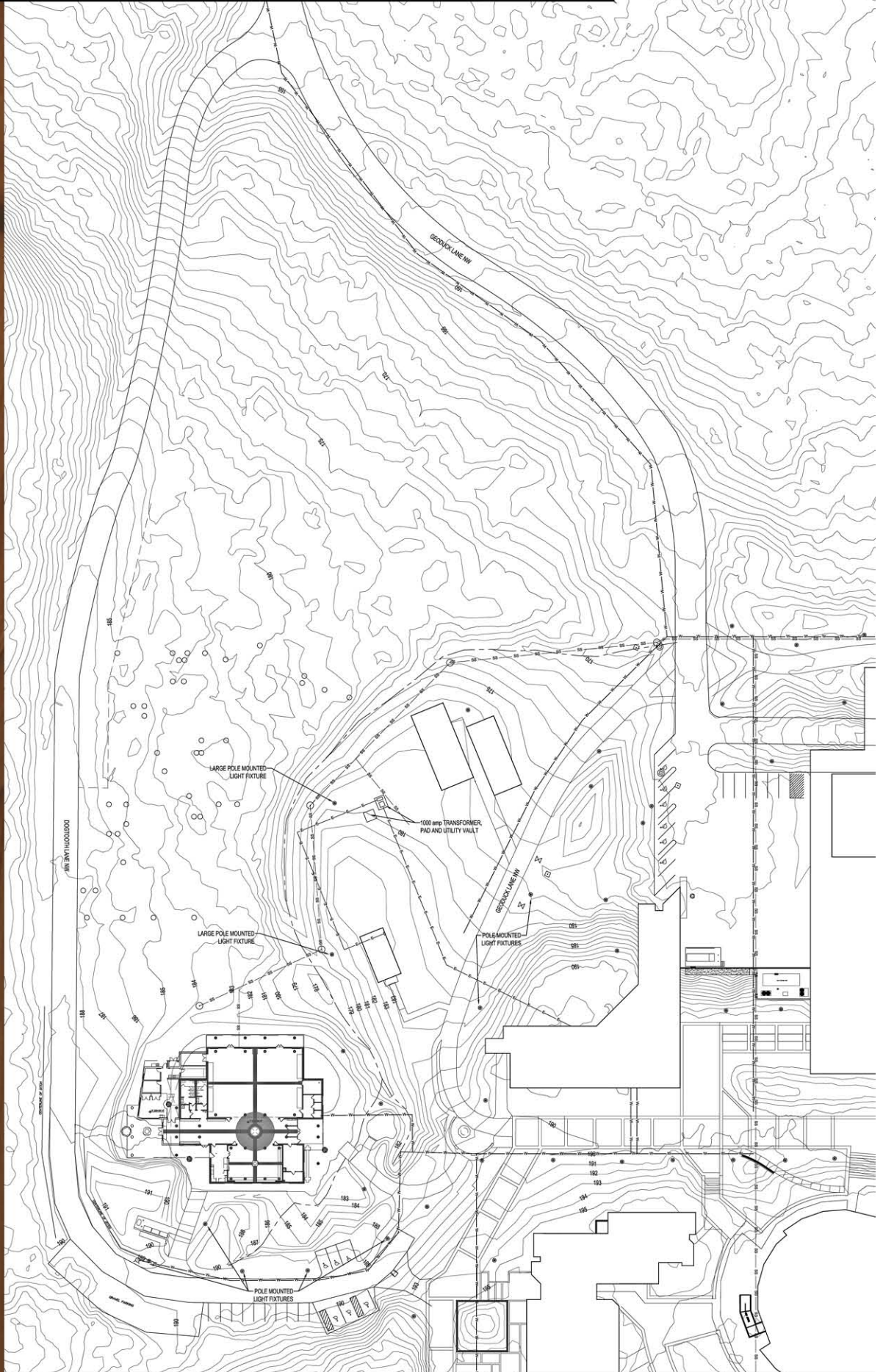
INDIGENOUS ARTS CAMPUS MASTER PLAN

"getting ready
for people
to come"



INDIGENOUS ARTS CAMPUS EXISTING UTILITIES

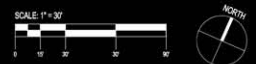
*"getting ready
for people
to come"*



INDIGENOUS
ARTS CAMPUS

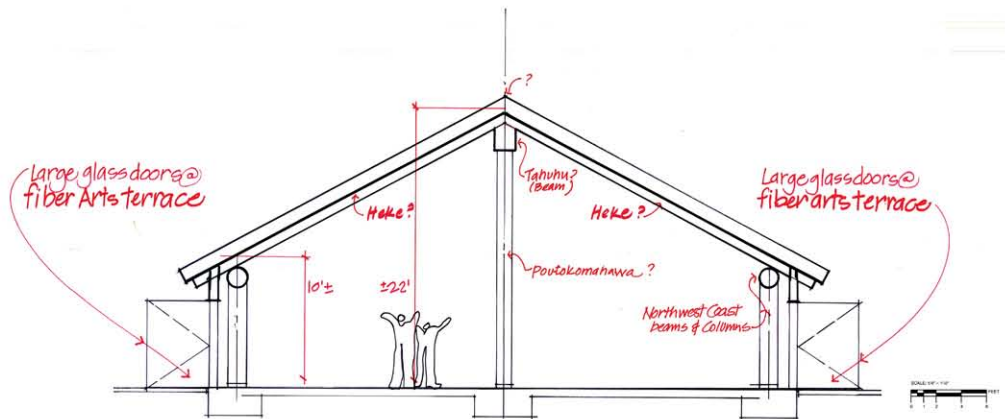
JONES JONES
ARCHITECTS
LANDSCAPE ARCHITECTS
PLANNERS

OCTOBER 2014



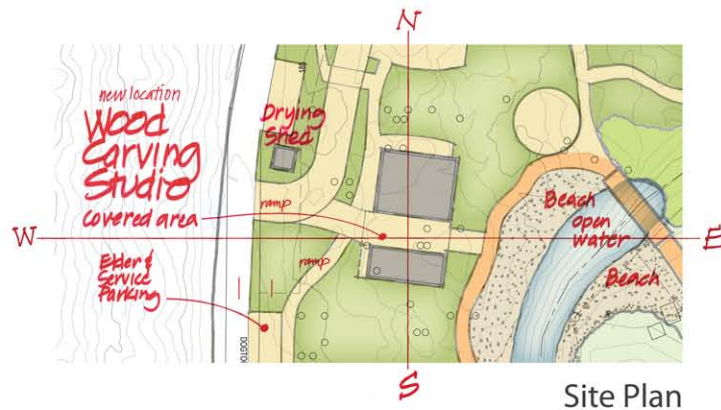
FIBER ARTS STUDIO CONCEPT SECTION

"getting ready
for people
to come"

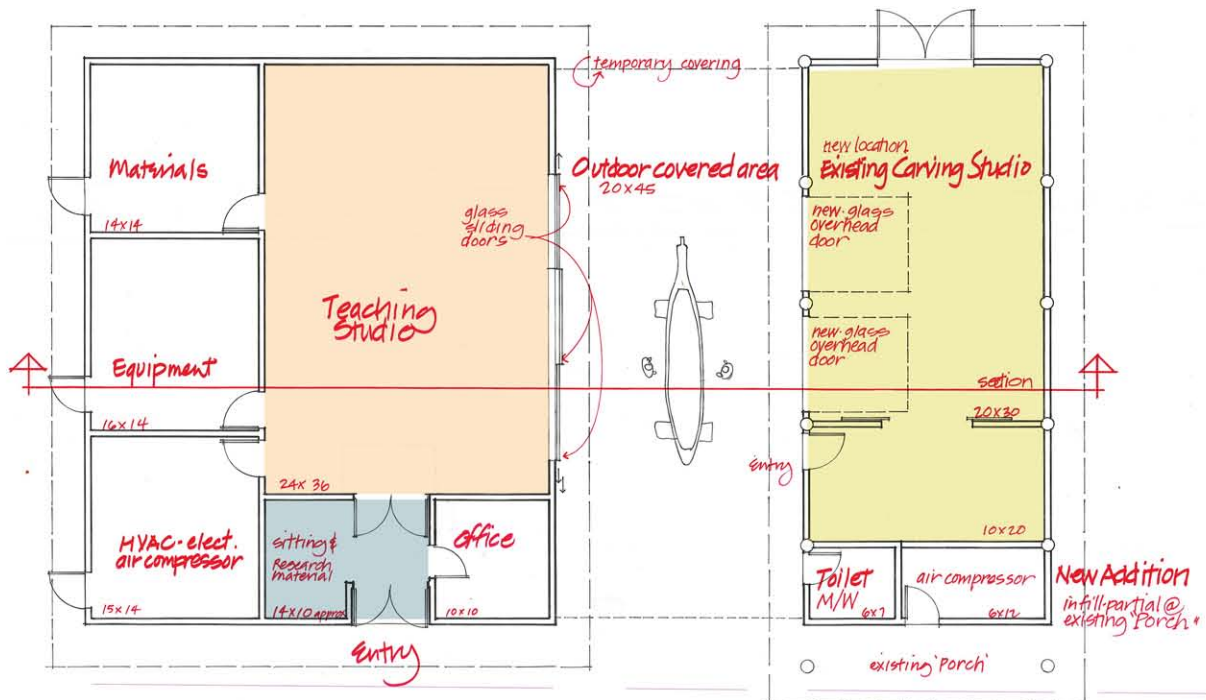


WOOD CARVING STUDIO CONCEPT PLAN

"getting ready
for people
to come"



Site Plan

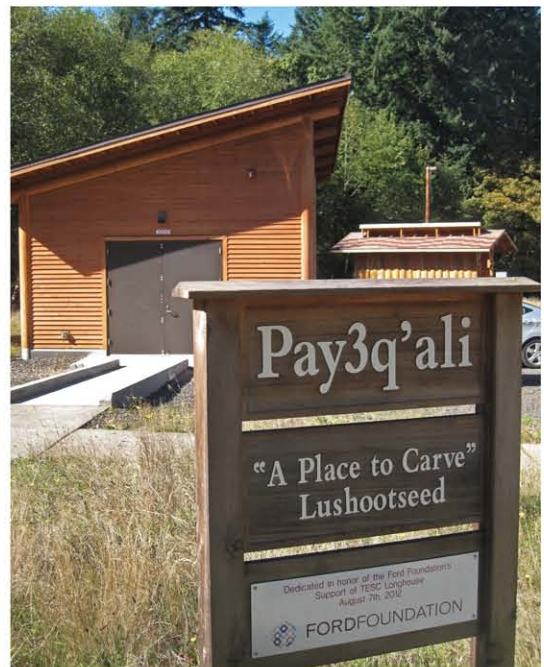
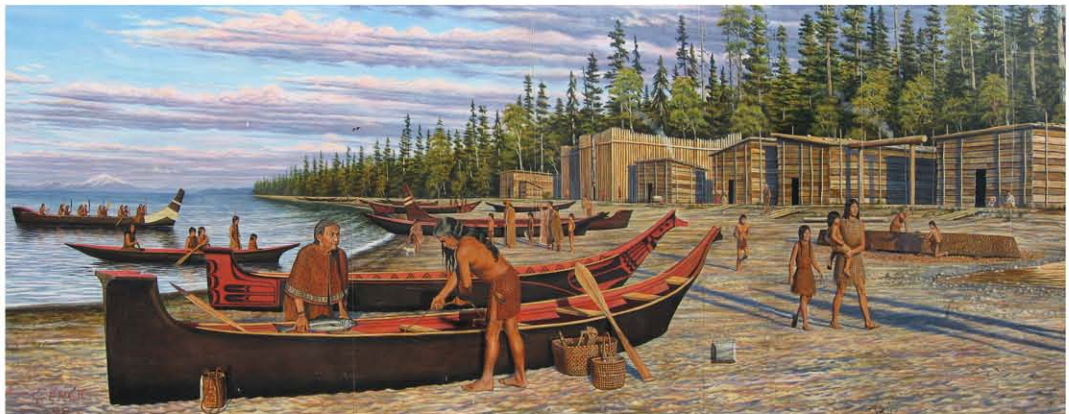
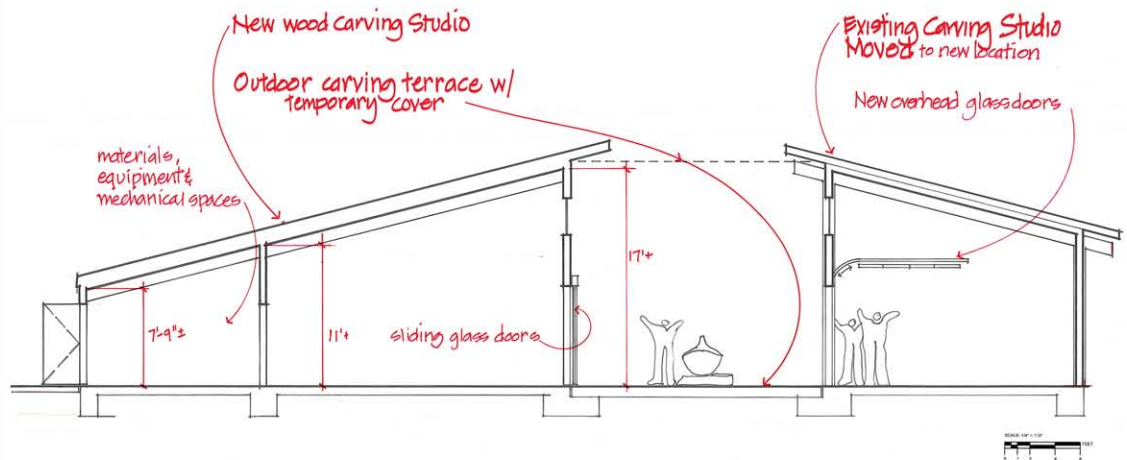


Floor Plan



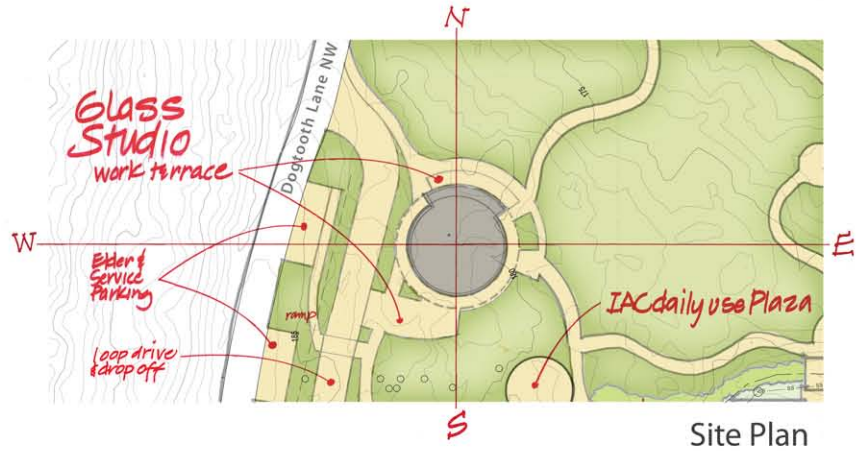
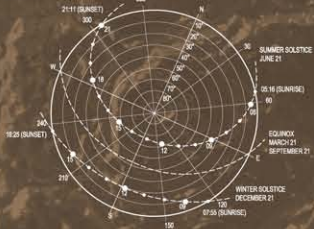
WOOD CARVING STUDIO CONCEPT SECTION

"getting ready
for people
to come"

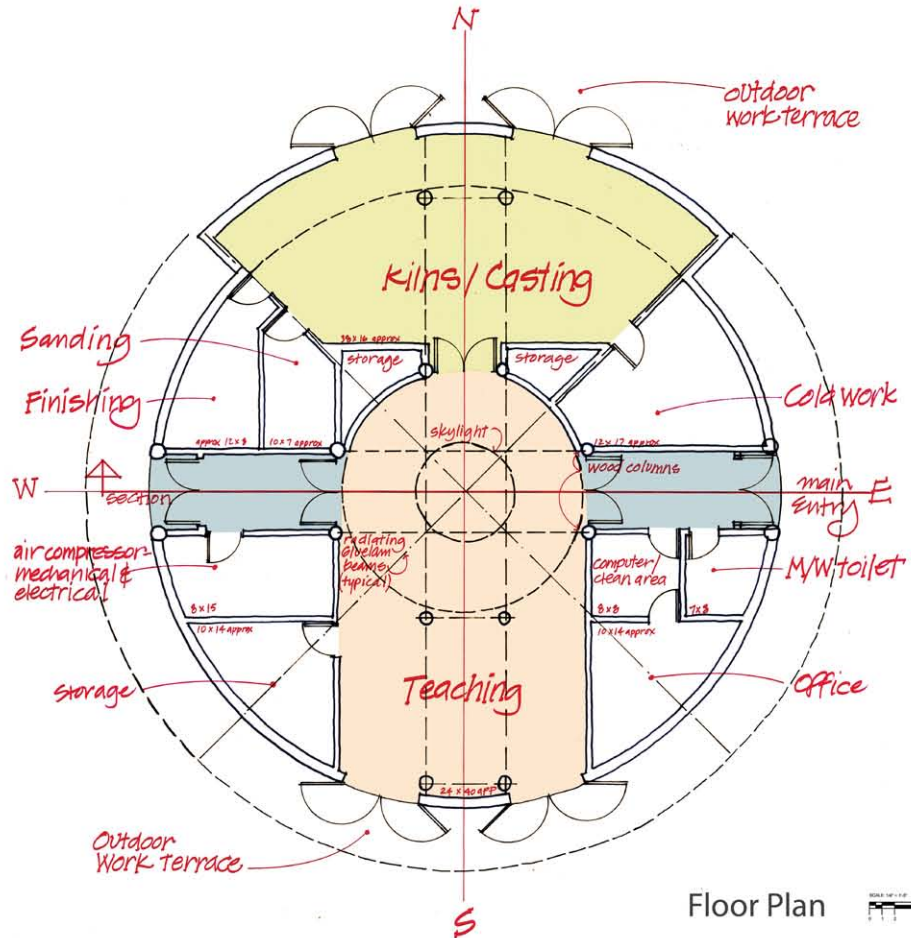


CAST GLASS STUDIO CONCEPT PLAN

"getting ready
for people
to come"



Site Plan

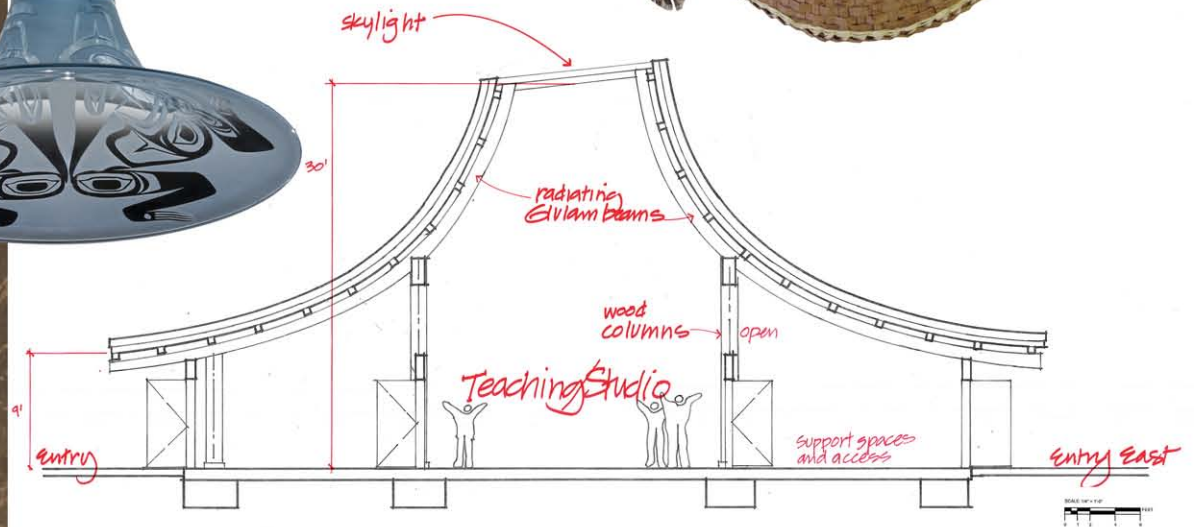


Floor Plan



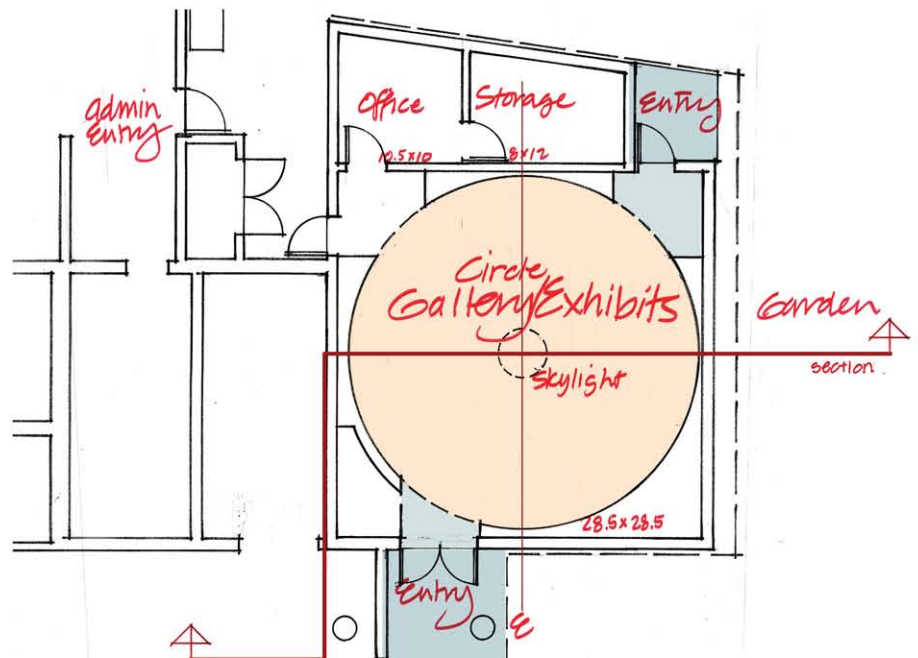
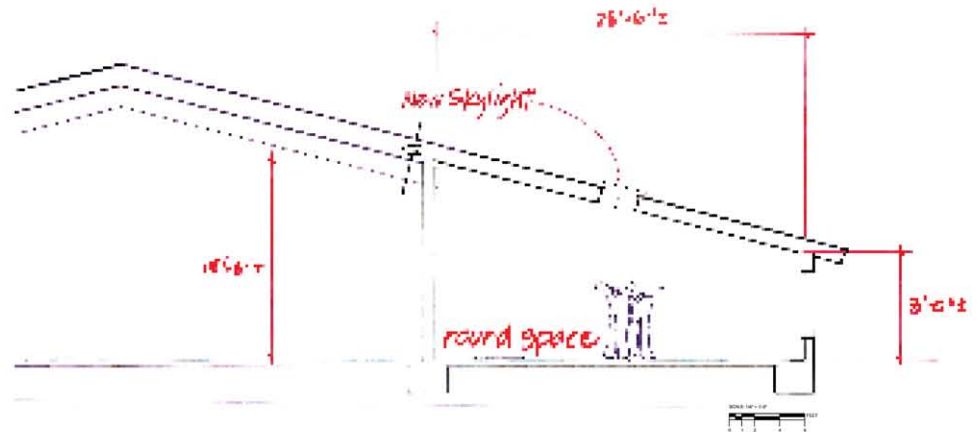
CAST GLASS STUDIO CONCEPT SECTION

"getting ready
for people
to come"

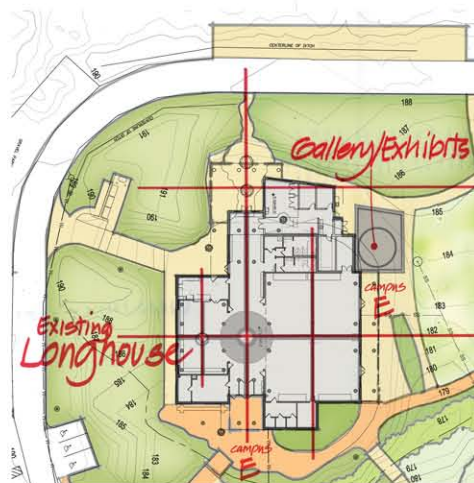


GALLERY / EXHIBIT SPACE CONCEPT PLAN & SECTION

"getting ready
for people
to come"



existing Classroom
Covered Walk
Garden





INDIGENOUS ARTS CAMPUS FACILITIES

BUILDING DEVELOPMENT SUMMARY

SF

FIBER ARTS STUDIO

2,955 +/-

CARVING STUDIO: EXISTING STUDIO RELOCATED & NEW STUDIO

2,633 +/-

CAST GLASS STUDIO

3,072 +/-

IAC GALLERY ADDITION TO LONGHOUSE

1,083 +/-


STUDENT & FACULTY STUDIOS

TBD

- Temporary Location Proposed in existing Portable Buildings
- Permanent Location Proposed in remodeled space of SEMINAR 1

JONES  JONES

ARCHITECTS
LANDSCAPE ARCHITECTS
PLANNERS



October 20, 2014



INDIGENOUS ARTS CAMPUS



MASTER PLAN SITE AREA PROGRAM

1. IAC SITE AREA PROGRAM

AC = 315,717sf; 7.25 acres

- a. Bridges connecting east and west area of site
 - Connecting path circulation to IAC & TESC Campus
 - Possible 2 bridges
 - Smaller bridge connecting from carving to existing Longhouse.
 - Bigger bridge for main walkway to west side of IAC paza area.
 - Carved items/art to be located on both bridges
 - Possible seating areas on bridges
 - Possible canoe shape bridge design for larger bridge
- b. Event outdoor large gathering area (140' x 70' - approx 9800sf)
 - Native market & celebrations area (well-draining grass area)
 - Possible outdoor regional Native gathering area
 - IAC & TESC event area
 - Circle design will connect to larger American and World Native Communities
 - Possible Ceremonial use
 - Possible big tent set up area
- c. IAC Daily use plaza
 - 40' x 40' – 1600sf
 - Hard surface plaza
 - Native paving pattern
 - Seating around edges
 - Fire pit area
 - Access to service road
 - Outdoor art display



MASTER PLAN SITE AREA PROGRAM

- d. Small sacred space
 - 20' x 20' – 400sf
 - Locate in tall tree area – private/quiet location; the eye of the salmon theme
 - Some seating arranged in a circle
 - Fire pit
 - Smudge activities/private setting required
- e. Create a water/beach area on site along existing site drainage area
- f. Reinforce existing wetlands areas & expand
- g. Provide service road access to all new facilities
- h. Elders parking along with ADA parking
- i. Service parking necessary
- j. Site Lighting
- k. Small outdoor areas w/ ea. IAC facility
 - Fiber Arts Studio area
 - Carving Studio area
 - Cast Glass Studio area
 - IAC facility/student studios
 - IAC Gallery area
 - Other future IAC studios (?)



FIBER ARTS STUDIO PROGRAM

2. FIBER ARTS STUDIO PROGRAM 2,955 sf +/- total

- a. Weaving area (19' x 30' = 585sf)
 - Looms; free standing, both large and small looms
 - Table looms / need tables
 - Floor weaving area with heated floors
 - Lots of natural light/lots of windows
 - Open wall space
 - Sliding doors to outdoor weaving area
 - Counter with sink
- b. Flexible/teaching area (19' x 30' = 585sf)
 - Open floor area
 - Tables and chairs sometimes
 - Group teaching space
 - Lots of natural light/lots of windows
 - Counter with sink
 - Wall display / teaching surface
- c. Seating/informal discussion/relaxing area (11' x 24' = 264sf)
 - Series of soft chairs and sofa
 - Small table
 - Book shelves
 - Close to coffee/tea area with stove and refrigerator and sink
 - Good outside view
 - Doors to outdoor area
 - Toilets: 1/M&W
- d. Dye area (11.5' x 18.5' = 213sf) + Wall Storage (2.5' x 18.5').
 - Open area with large tables
 - Counters along wall with 2 large sinks (rinsing station), and cooking stove. Lots of counter for holding dye, soaking utility tubs.
 - Really good ventilation



FIBER ARTS STUDIO PROGRAM

- e. Outdoor covered area with storage cabinets, large utility sink, SS counter (9.5' x 44.5' = 423sf)
 - Located next to dye garden
 - Hanging area with pole storage for drying activities
 - Warm/sunny side for drying
 - Washer/dryer with storage above
 - Storage bins and recycling bins
 - Tables for sitting and processing
- f. Storage and wild materials prep room with freezer area; shelving one wall; counter with sink one wall; table in middle; with direct access to outdoors (7 x 12' = 84sf)
- g. General storage area (10' x 12' = 120sf)
 - Open shelving with storage bins
 - Lockable cabinet
 - Area for tables/chairs storage
- h. Outdoor garden area (60' x 60' = 3,600sf outdoor garden center)
 - Garden planting area for "Native Dye Garden" (teaching garden with dye use growing and collection)
 - Tool shed with water connection (8' x 8' = 64sf)
 - Hot water connection to prepare dye outside
 - Locate garden adjacent to FAS
 - Recycle bins
 - Loading area & wheeled carts
- i. HVAC/electrical area (15' x 15' = 225sf) above or below
- j. Office area (7' x 7' = 49sf)
- k. Entry/Gallery (11' x 46' = 506sf) (seating area)
 - Entry
 - Gallery area
 - Seating
- l. Welcome Entry Porch (8' x 44.5' = 356sf)