

How Has the Undergraduate Population Changed Over Time on the Olympia Campus?

Demographic Trends Among Nonresident and Resident Populations at The Evergreen State College

1980-2004

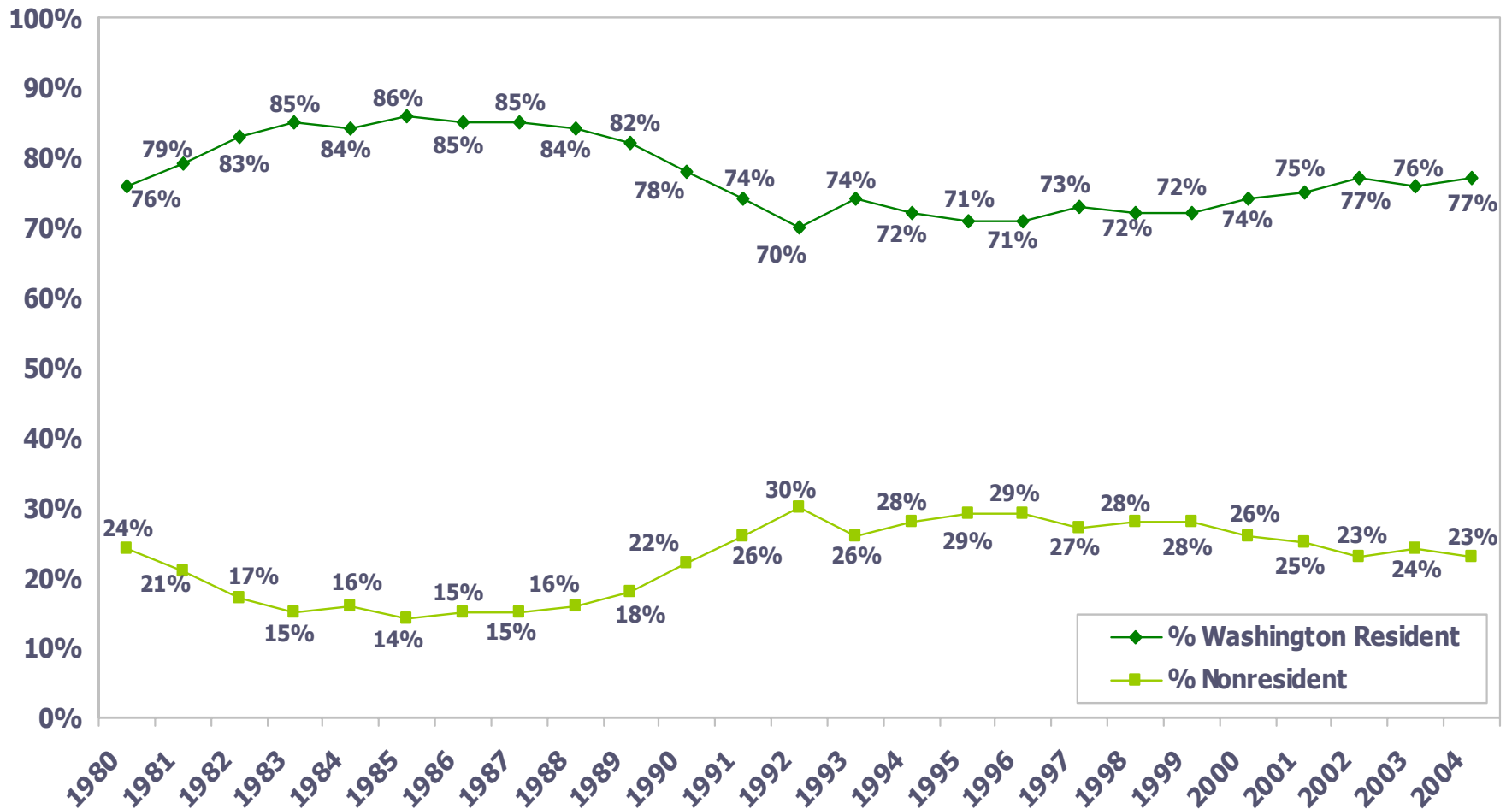
The following information was compiled to understand trends in undergraduate enrollment demographics at the Olympia campus.

- The demographics of the Tribal Reservation-Based; Tacoma, and Grays Harbor programs are very different from the population of Evergreen students in Olympia. The programs outside of Olympia are smaller and targeted at specific populations. In Fall 2004, 93% of all undergraduate students were enrolled primarily in programs located in Olympia.
- Data describing Washington resident and nonresident populations were disaggregated and analyzed, in order to understand differences among these populations.

Olympia Campus Undergraduate Population by Residency Status

The Evergreen State College

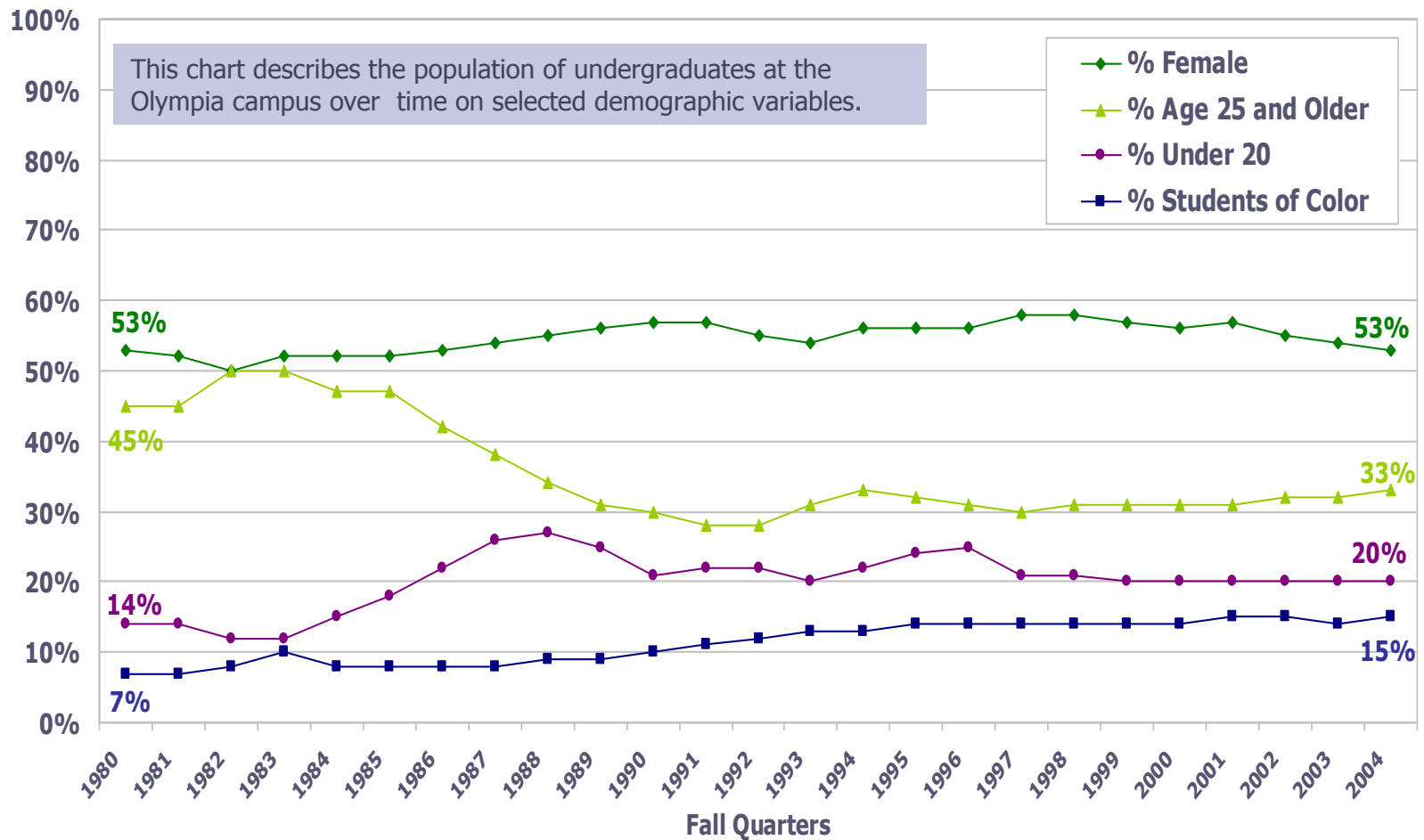
Fall Quarters 1980-2004



Demographic Trends of Undergraduates

The Evergreen State College, Olympia Campus

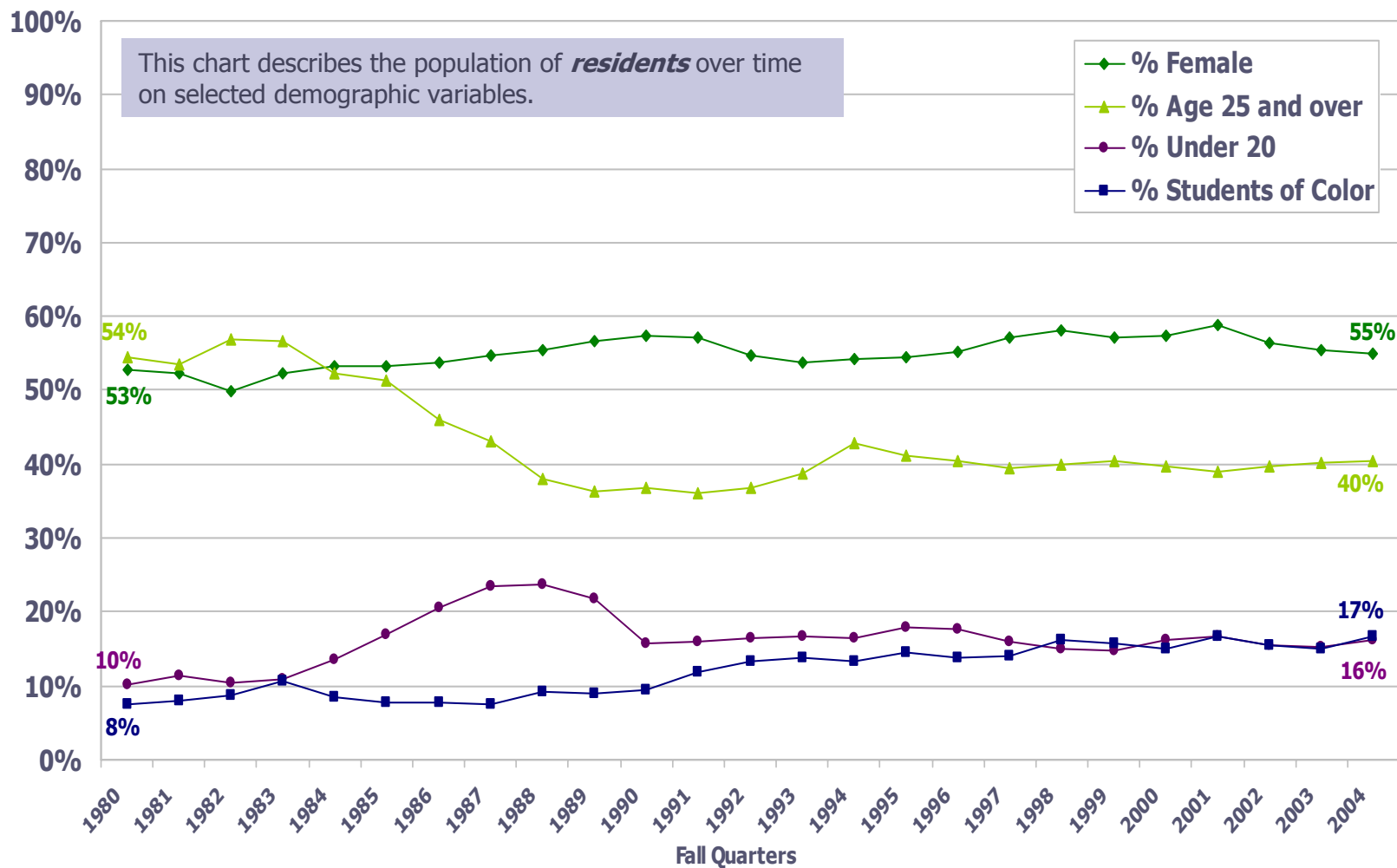
Fall Quarters 1980-2004



Selected Demographic Trends of Washington *Resident* Undergraduates

The Evergreen State College, Olympia Campus

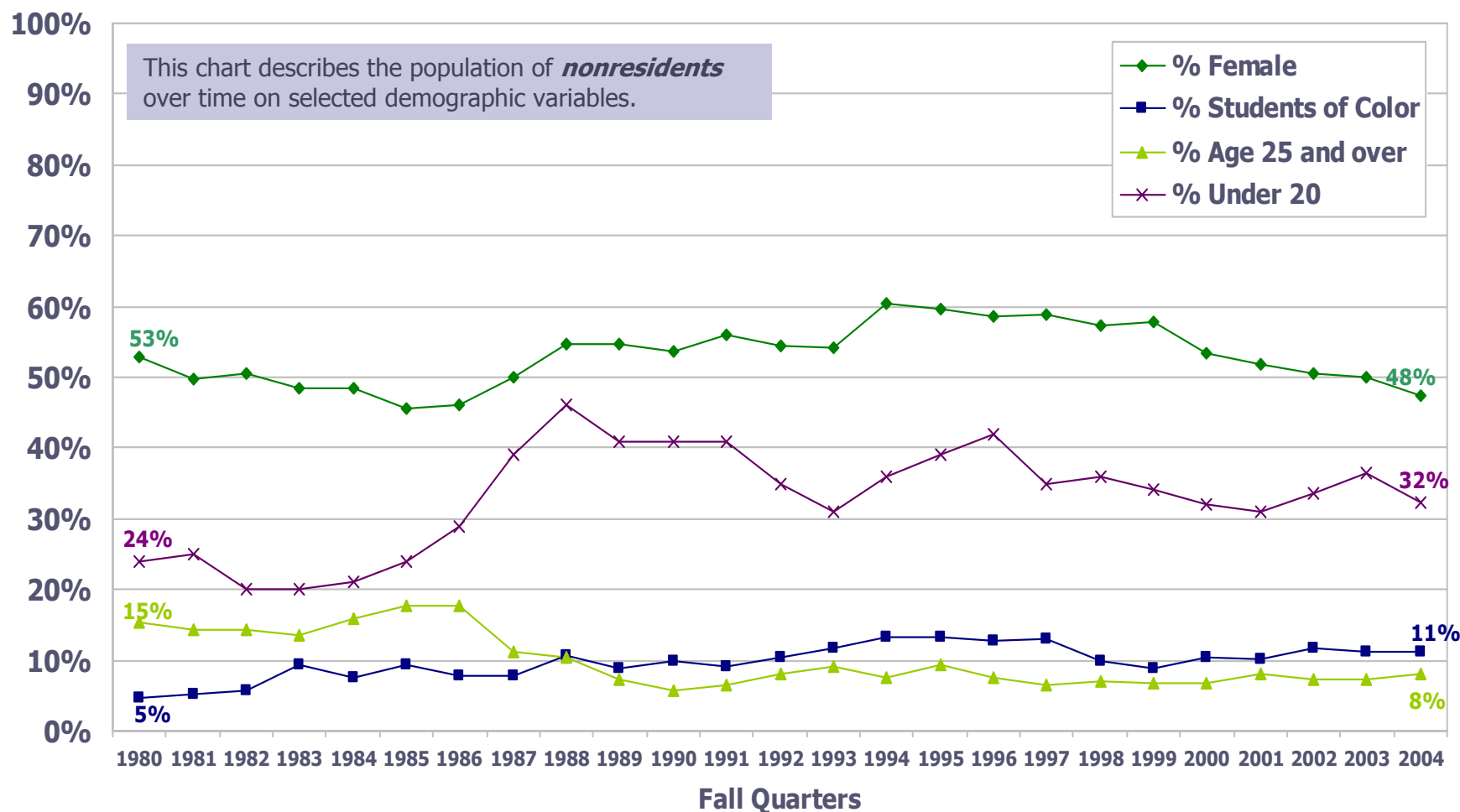
Fall Quarters 1980-2004



Selected Demographic Trends of *Nonresident* Undergraduates

The Evergreen State College, Olympia Campus

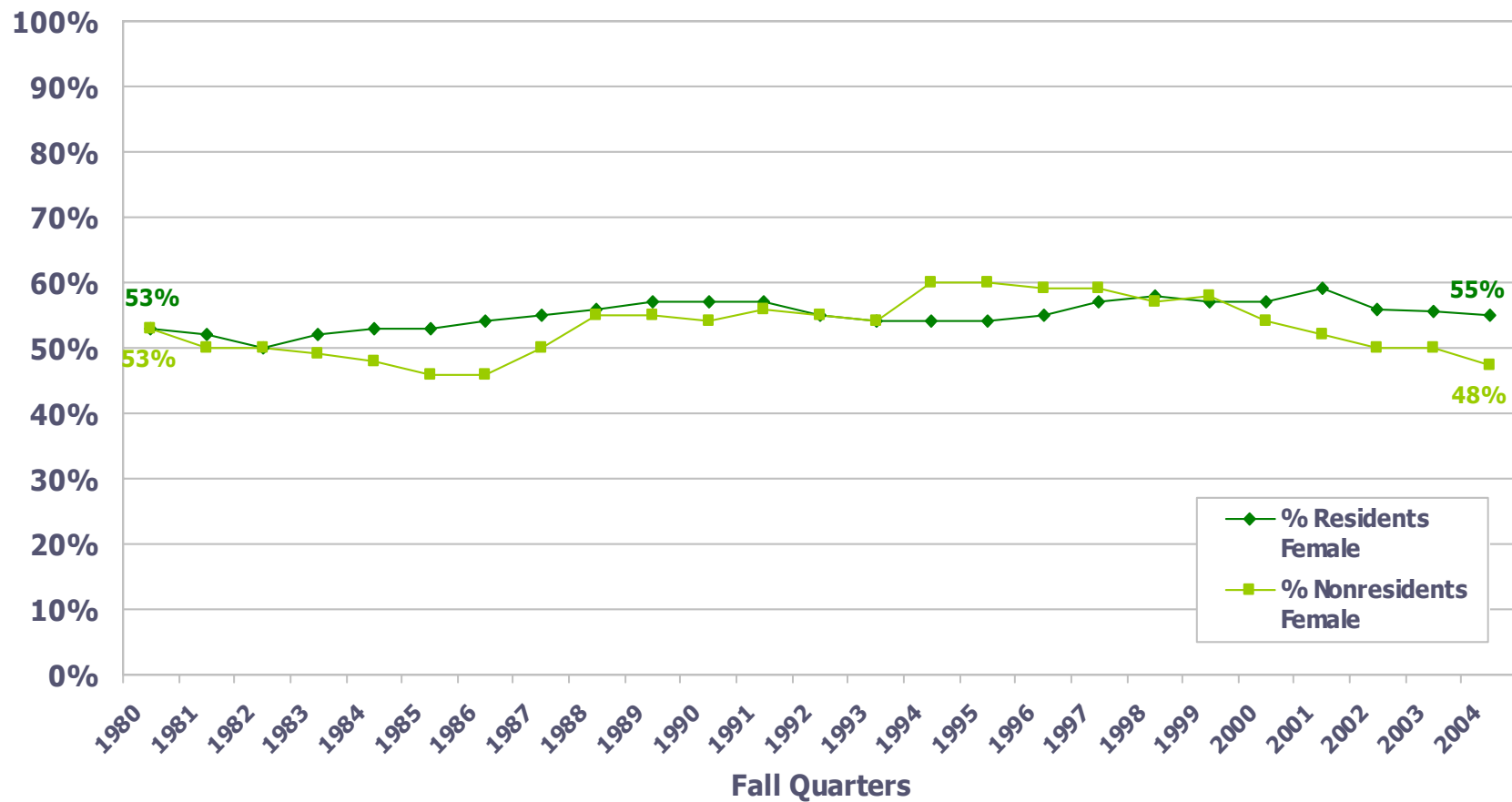
Fall Quarters 1980-2004



Comparison of Percent Resident/Nonresident Female

Evergreen Undergraduates at Olympia Campus

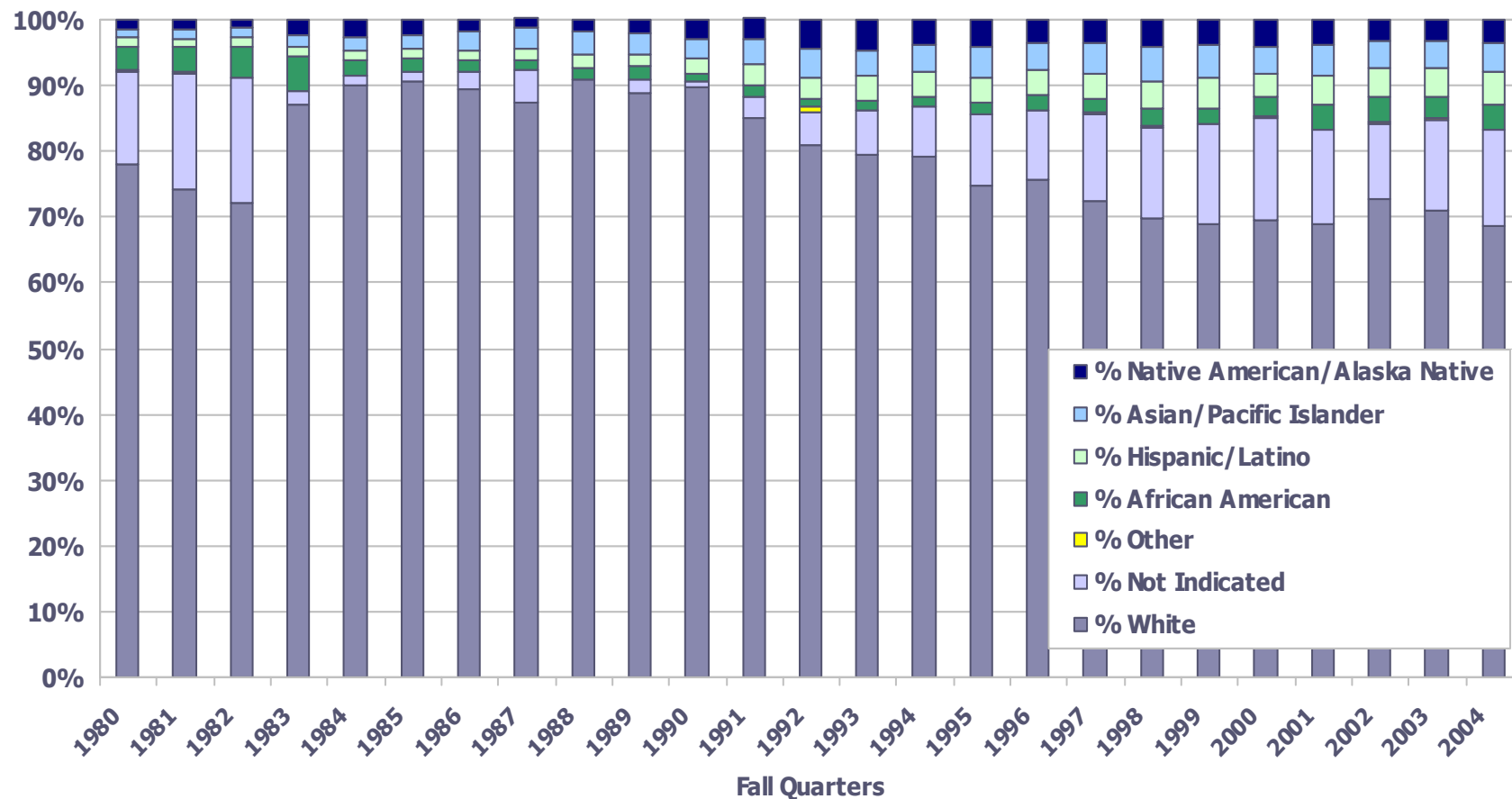
Fall Quarters 1980-2004



Change in Ethnic/Racial Composition of Resident Population

Evergreen Undergraduates at Olympia Campus

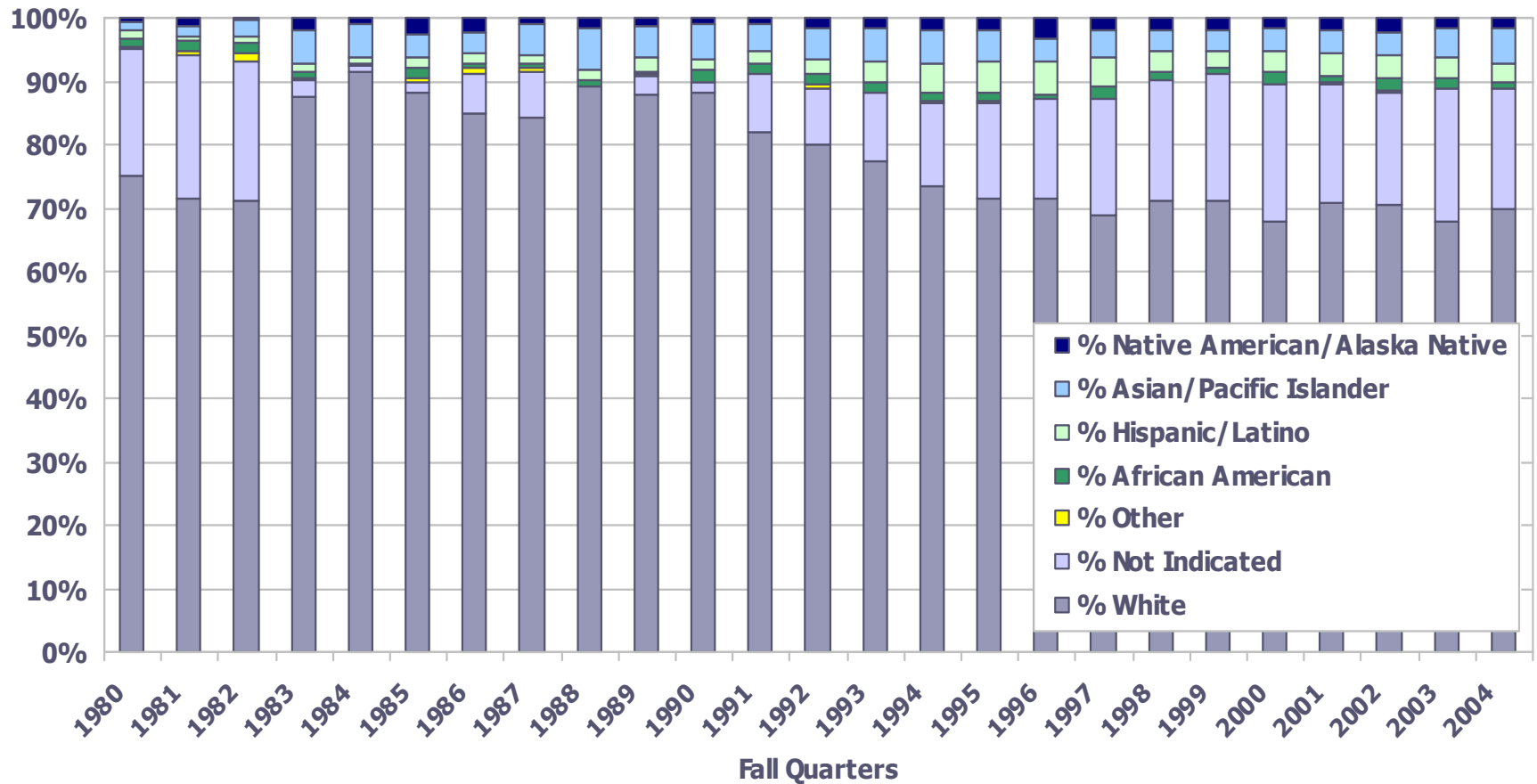
Fall Quarters 1980-2004



Change in Ethnic/Racial Composition of Nonresident Population

Evergreen Undergraduates at Olympia Campus

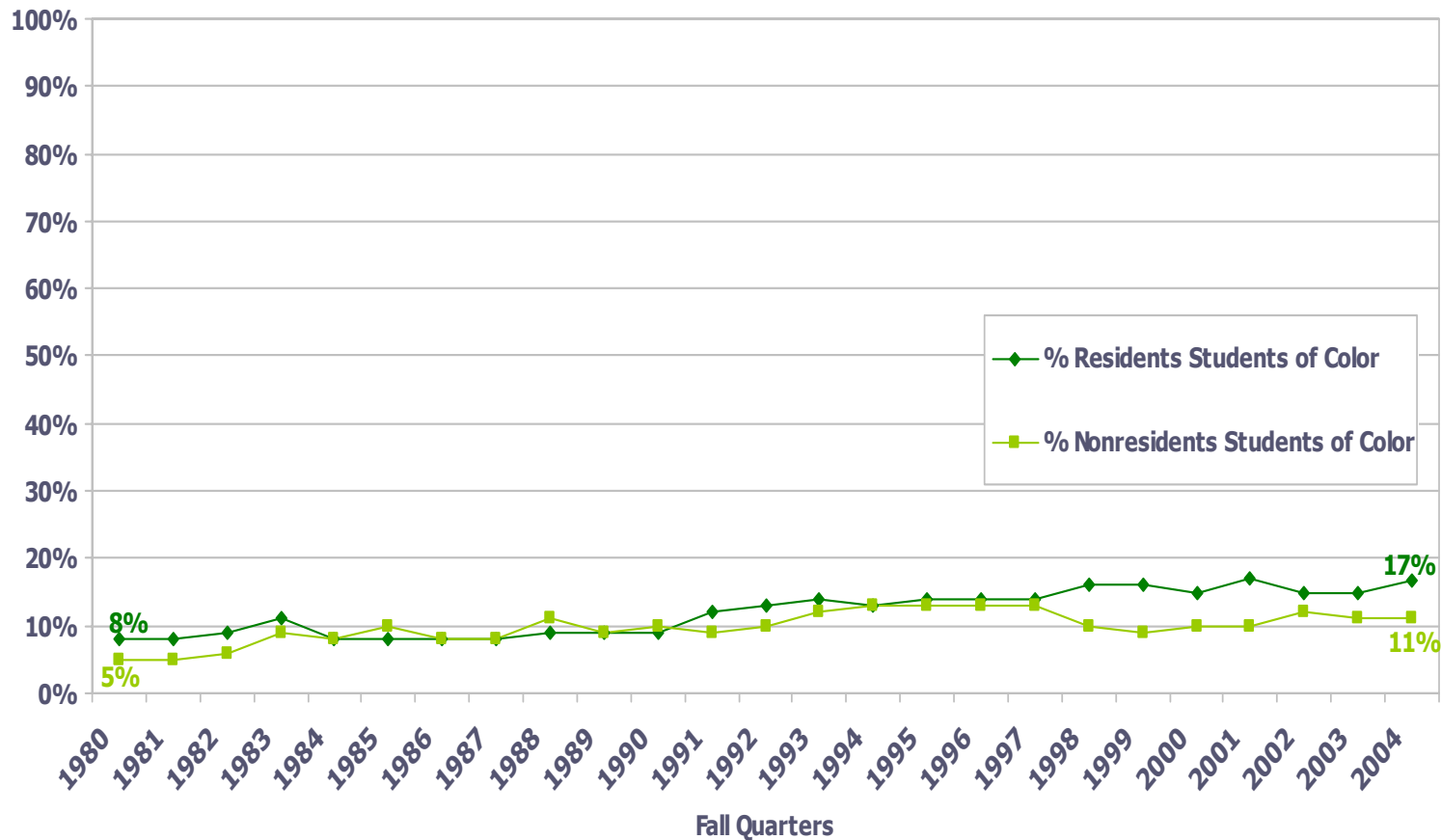
Fall Quarters 1980-2004



Comparison of Percent of Residents/Nonresidents Students of Color

Evergreen Undergraduate at Olympia Campus

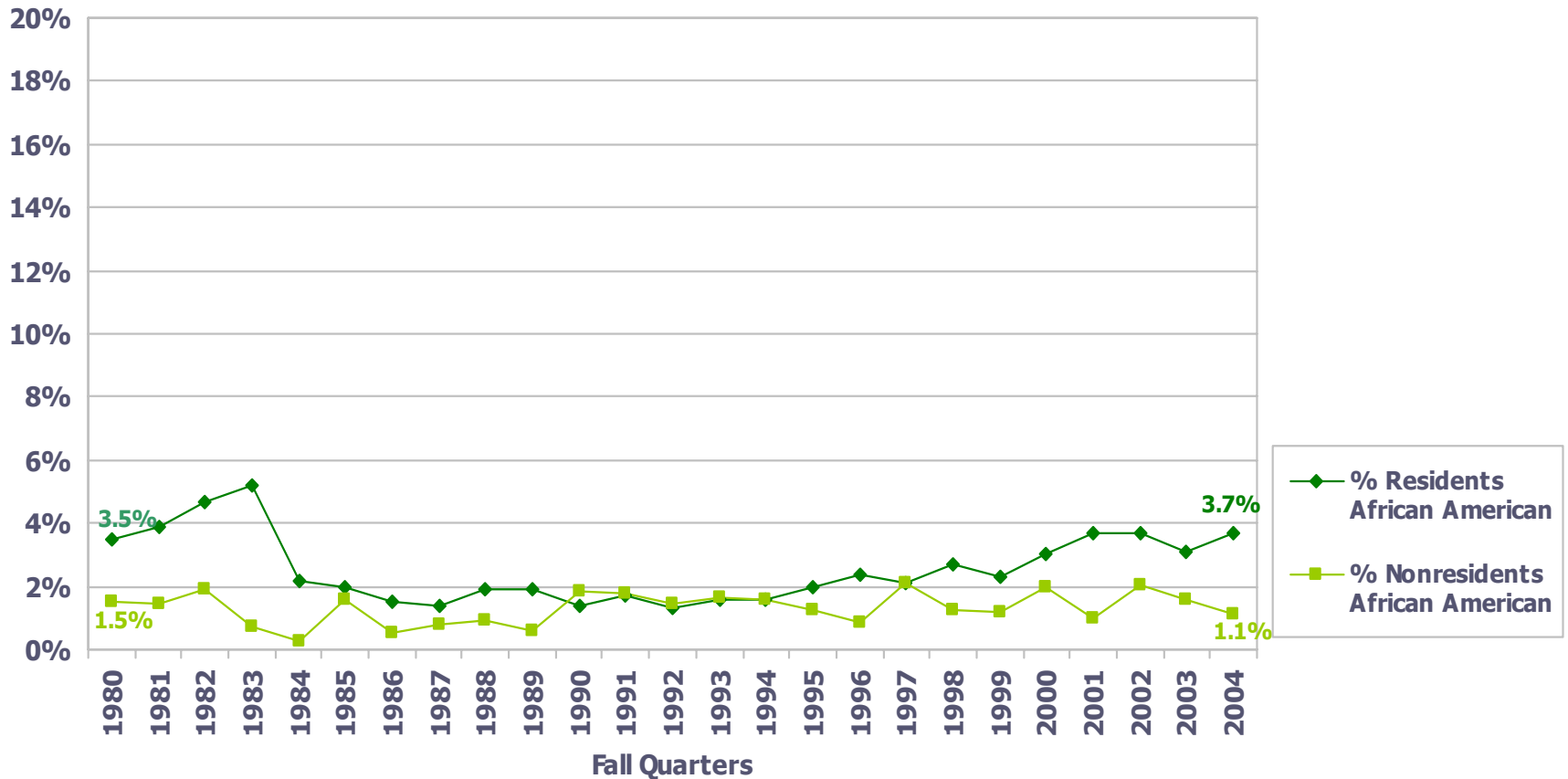
Fall 1980-2004



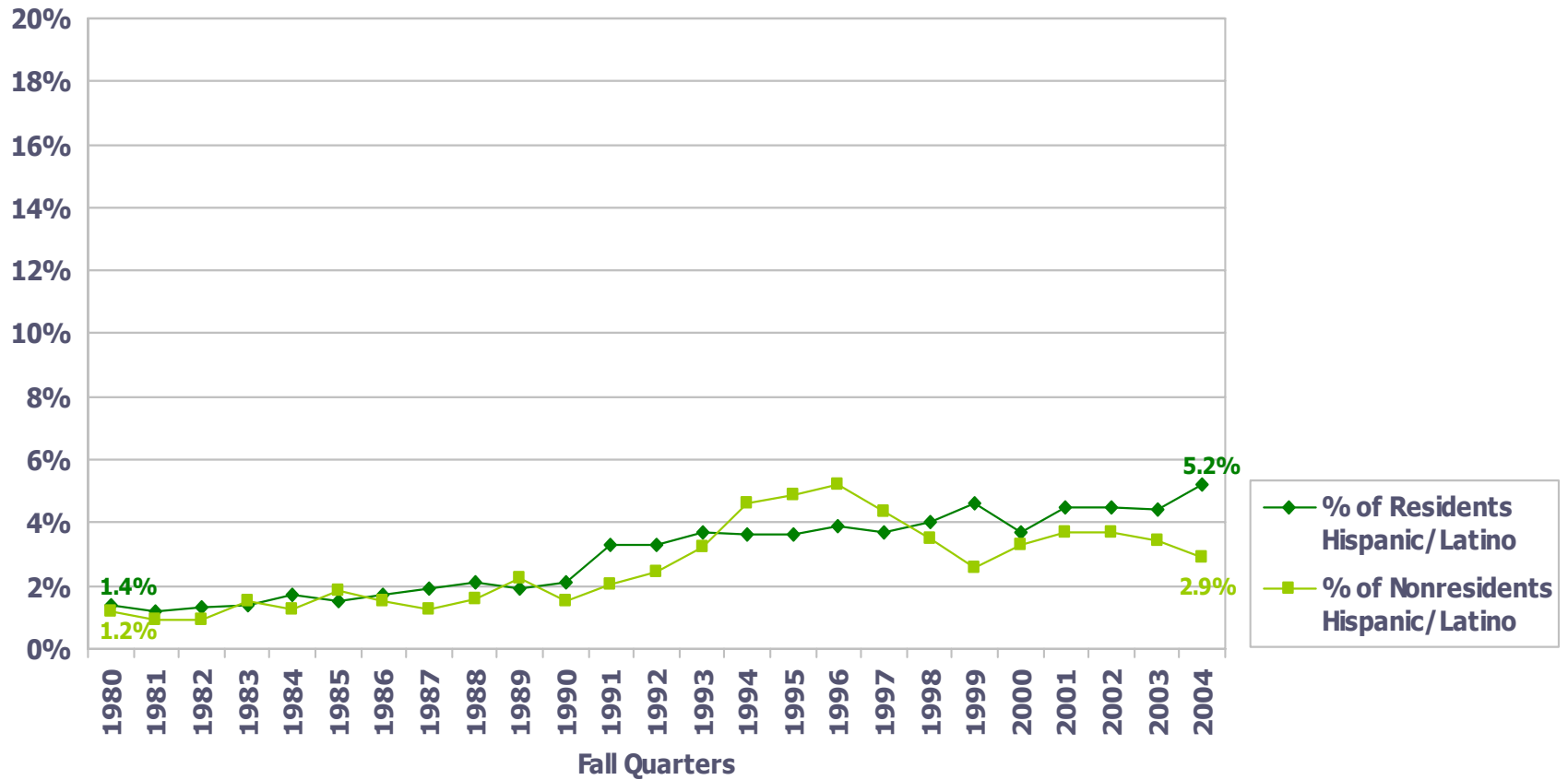
"Students of color" includes students that identify themselves as being Native American/Alaska Native, African American, Asian/Pacific Islander, or Hispanic/Latino.

The next series of charts shows the same data, but compares nonresident and resident populations within particular ethnic/racial categories.

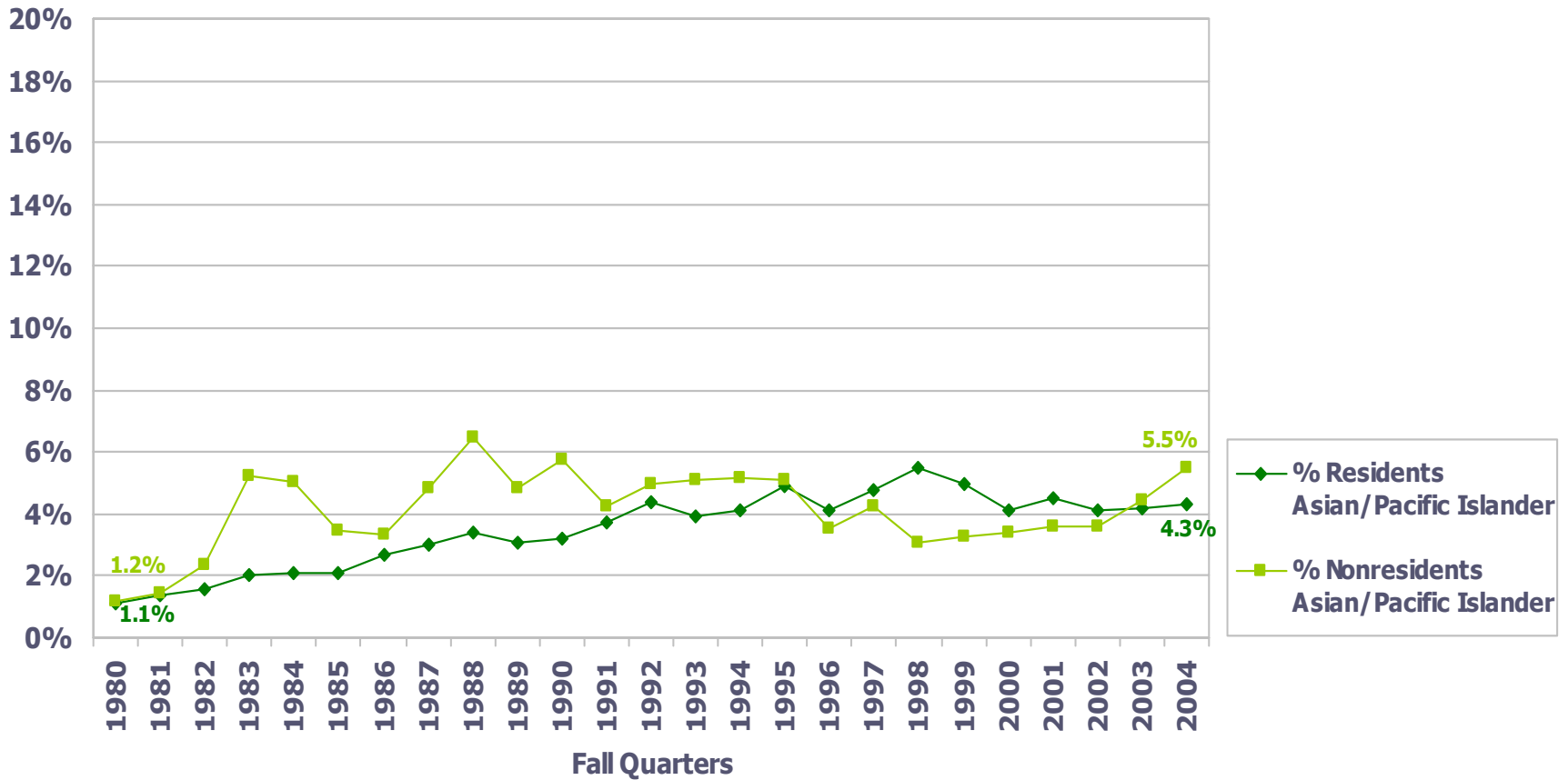
Comparison of Percent of Residents/Nonresidents African American Evergreen Undergraduates at Olympia Campus Fall Quarters 1980-2004



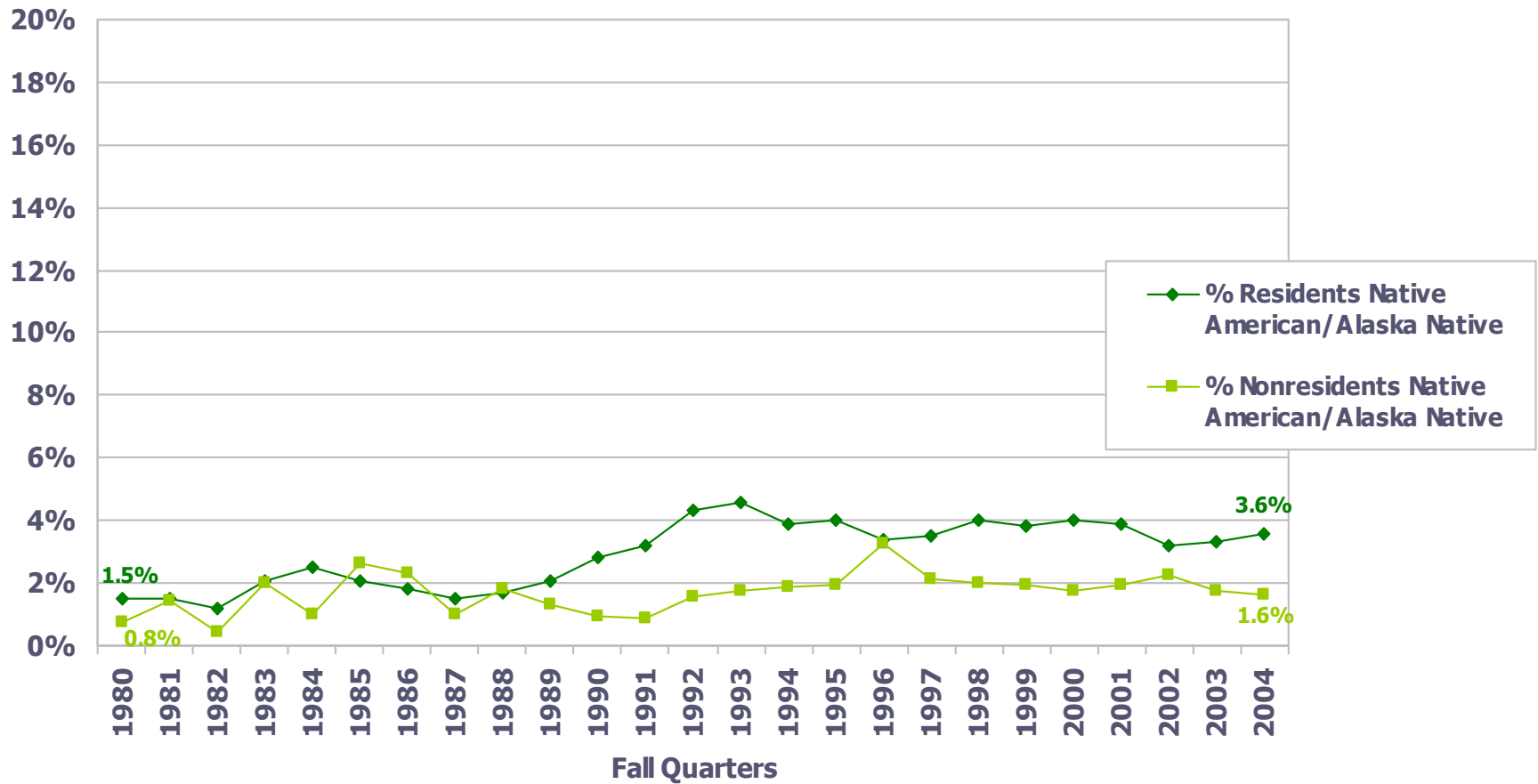
Comparison of Percent of Residents/Nonresidents Hispanic/Latino Evergreen Undergraduates at Olympia Campus Fall Quarters 1980-2004



Comparison of Percent of Residents/Nonresidents Asian/Pacific Islander Evergreen Undergraduates at Olympia Campus Fall Quarters 1980-2004



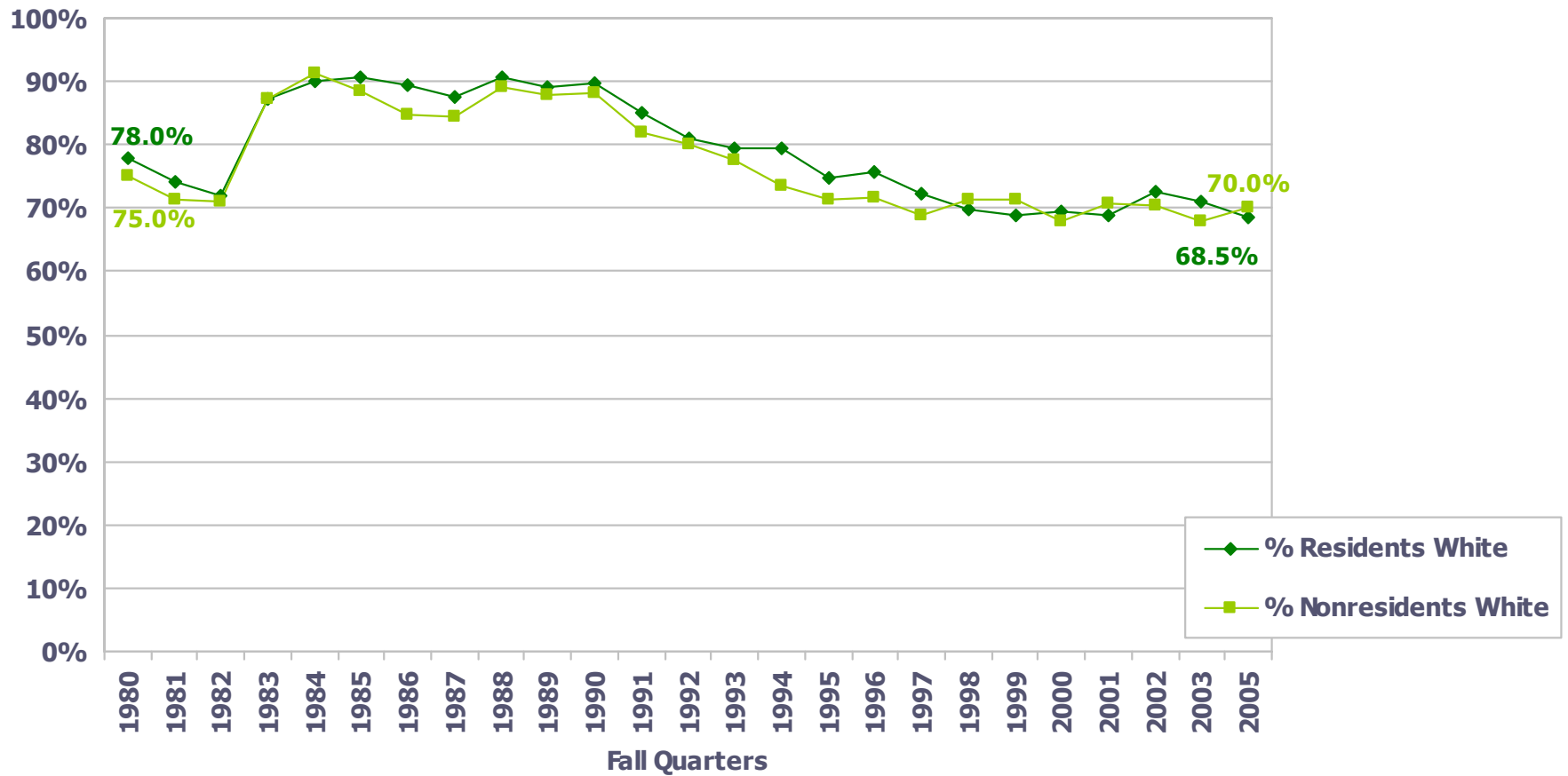
Comparison of Percent of Residents/Nonresidents Native American/Alaska Native Evergreen Undergraduates at Olympia Campus Fall Quarters 1980-2004



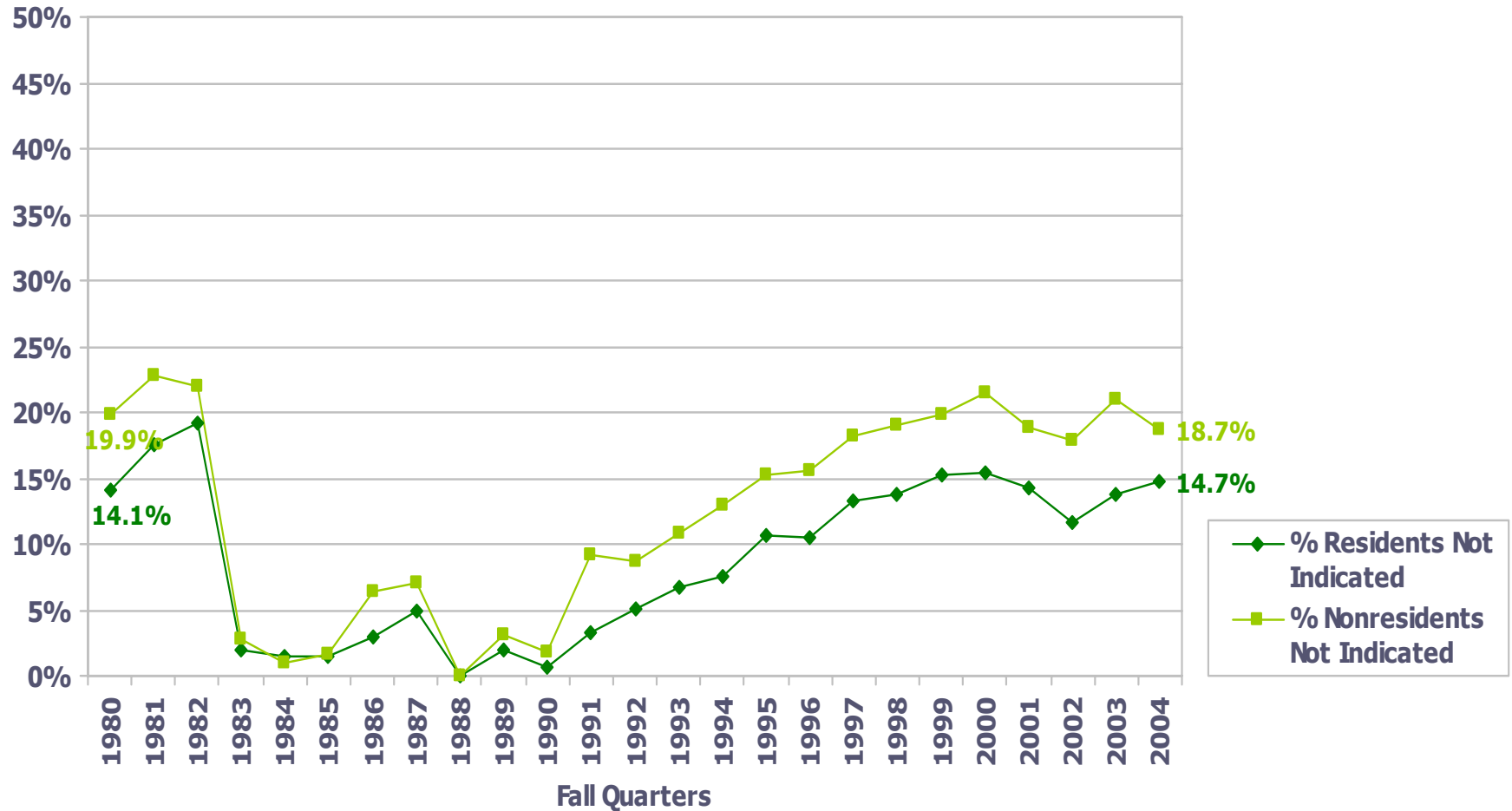
Comparison of Percent of Residents/Nonresidents White

Evergreen Undergraduates at Olympia Campus

Fall Quarters 1980-2004



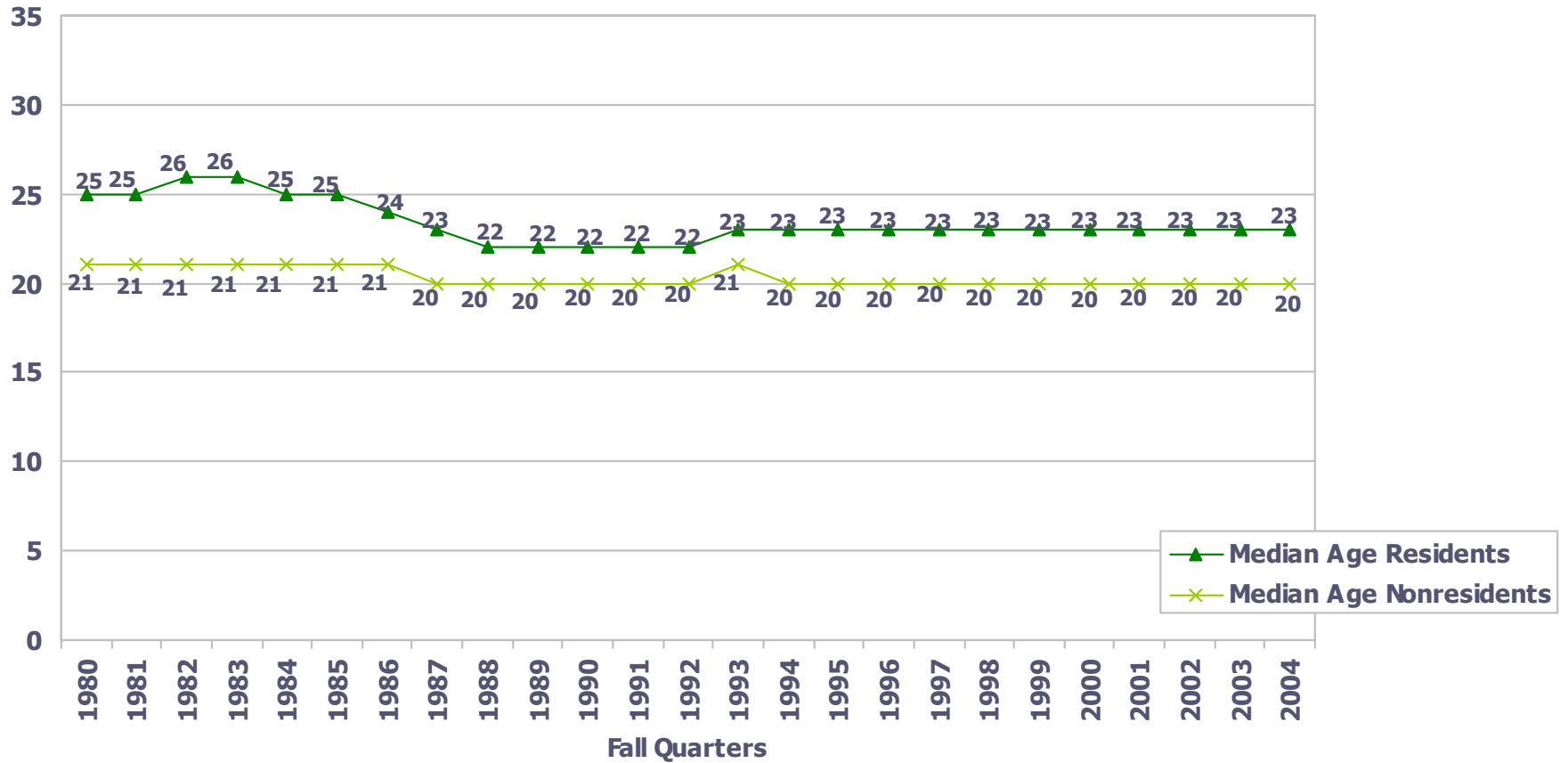
Comparison of Percent of Residents/Nonresidents with Ethnicity Not Indicated Evergreen Undergraduates at Olympia Campus Fall Quarters 1980-2004



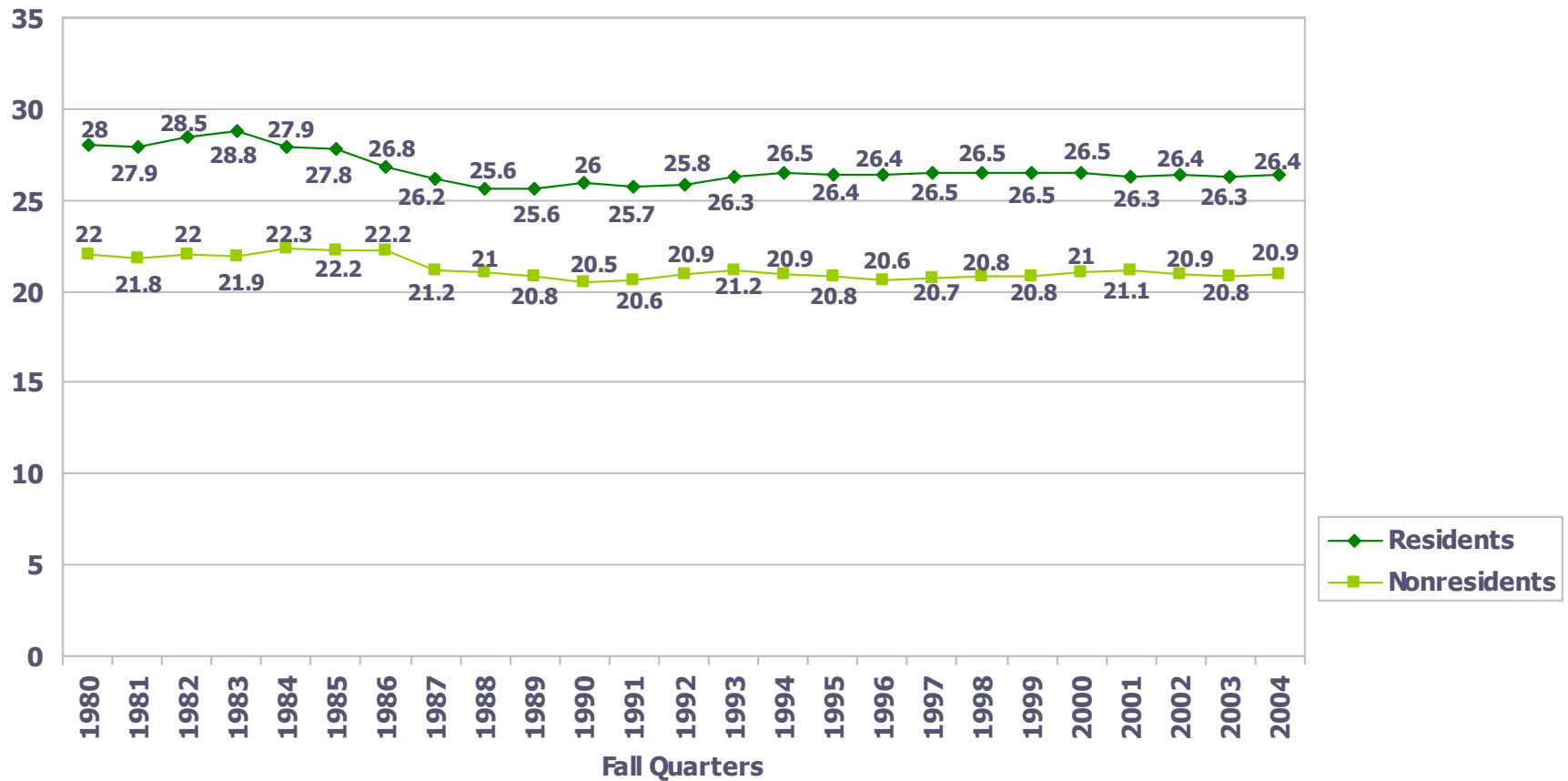
Comparison of Median Age of Residents/Nonresidents

Evergreen Undergraduates at Olympia Campus

Fall Quarters 1980-2004



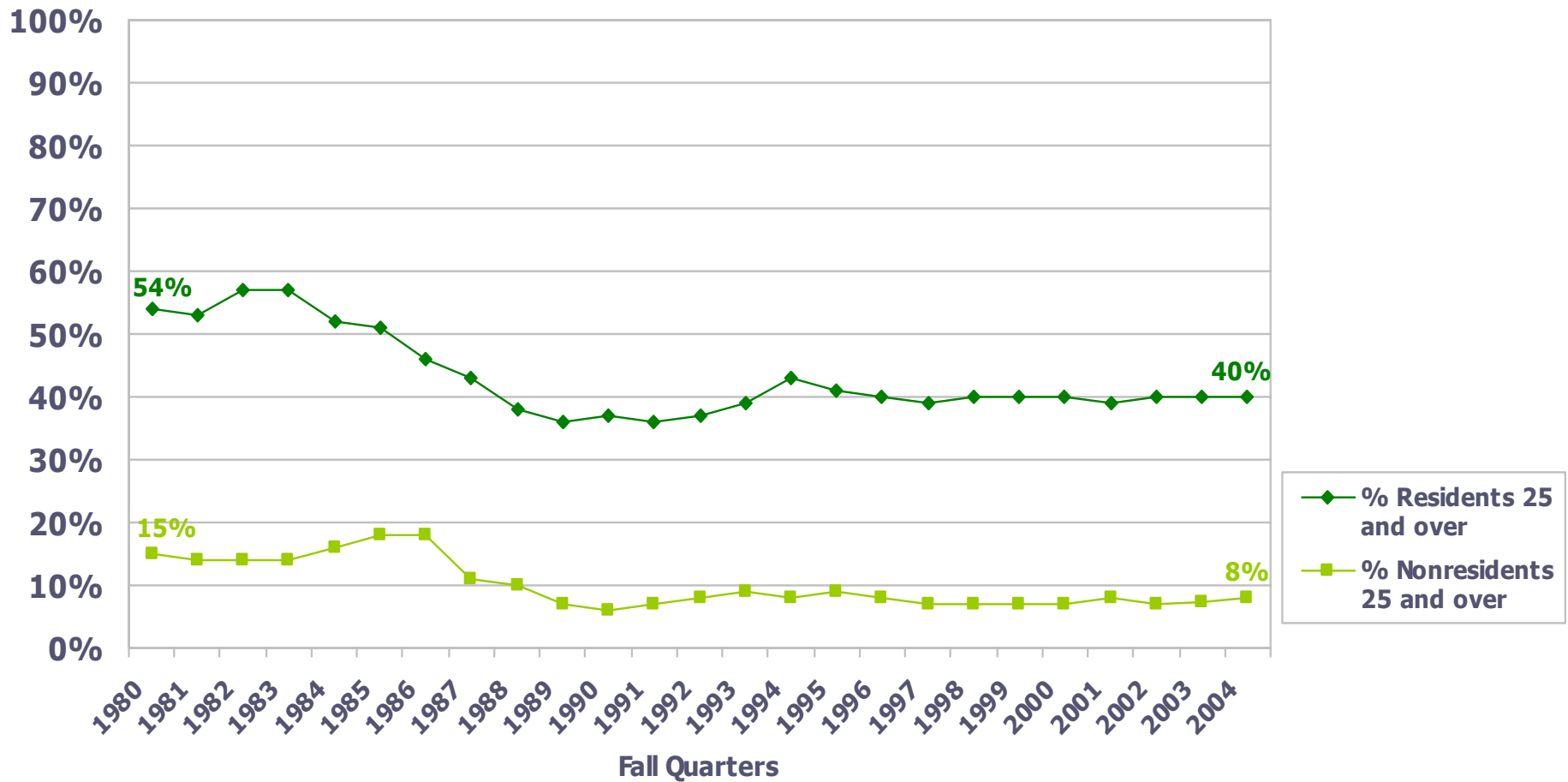
Comparison of Average Age of Residents/Nonresidents Evergreen Undergraduates at Olympia Campus Fall Quarters 1980-2004



Comparison of Percent of Residents/Nonresidents 25 and Over

Evergreen Undergraduates at Olympia Campus

Fall Quarters 1980-2004



Comparison of Percent of Residents/Nonresidents Under 20

Evergreen Undergraduates at Olympia Campus

Fall Quarters 1980-2004

