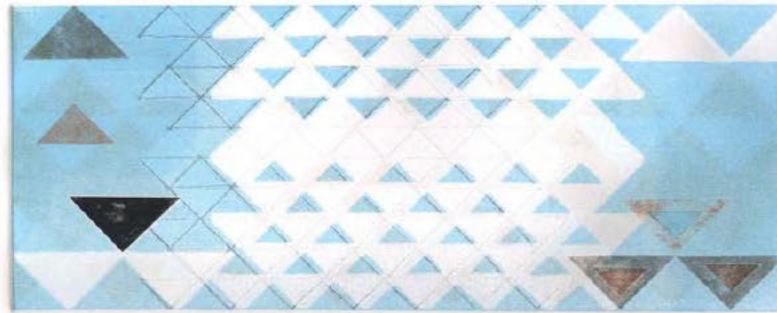


2010 Native Creative Development Awards

©All rights reserved by individual artists.

Anthony Calloway (Karuk)

Create prints based on traditional Karuk basketry designs and set up a home studio



Ánav-váas (Medicine Blanket)

15" x 11"

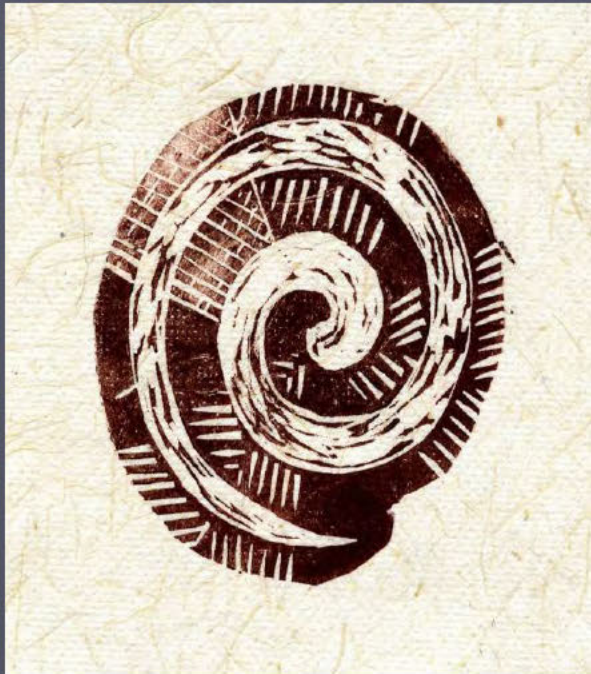
Monotype with graphite transfer

2010

Miki'ala Catalfano (Kanaka Maoli)

Purchase printmaking equipment and supplies to develop a body of work for marketing.

Develop professional artist website and portfolio



Piko

Relief print, brown oil based ink, handmade harakeke paper
2010



Self-Portrait

Linocut
2010

**Yvette Diltz
(Tsimshian)**

Purchase
photography equipment to
use in creating drawing
and paintings, create
series of portraits called
"Coats"



The Wading Pool
6" x 6"
oil on canvas
2008

Denise Emerson (Skokomish)

Study the history, construction and creative impulses surrounding Native bead craft to inform future compositions for her own work.



Plateau Cornhusk Bag Designed Necklace and Earrings

3" x 4" Necklace, 1" x .5" earrings
seed beads, bone, glass, suede
2010

ShgenDooTan George (Tlingit)

Purchase spinning wheel and other wool processing tools to hand spin,
hand dye mountain goat wool for weaving



Untitled

58" x 50"

merino wool, sea otter

2009

Pat Courtney Gold (Warm Springs)

Develop professional website to promote her work to national and international audiences that combines Wasco culture, the cultures of the Pacific Northwest tribes and professional images of her art



Mustang

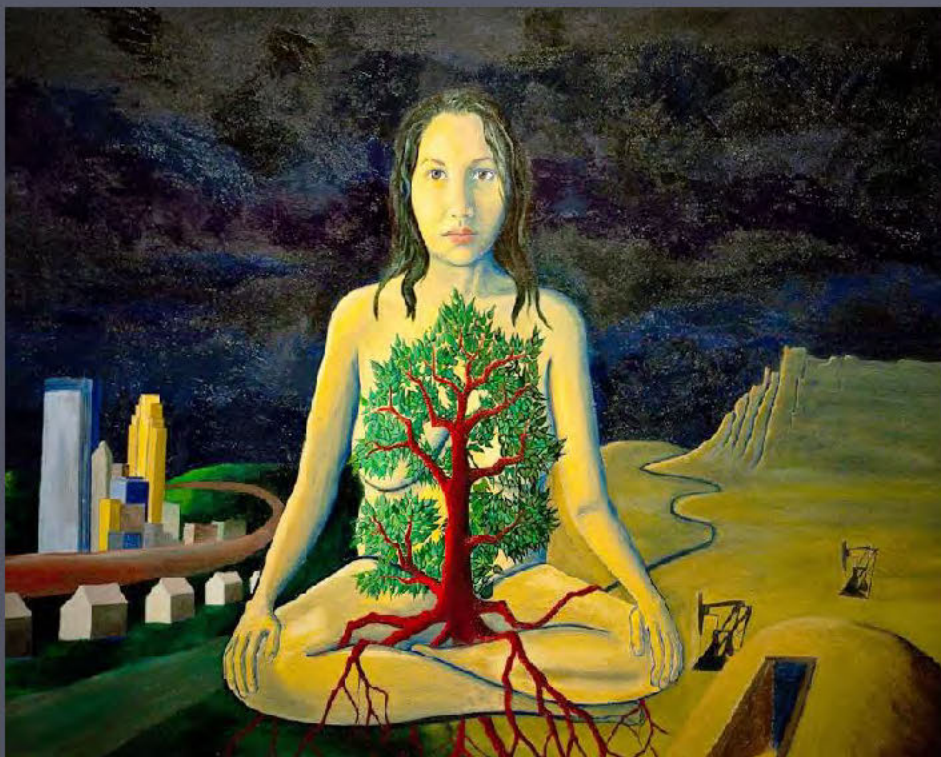
10"x9"

cotton yarn, metallic yarn, hemp warp

2009

Emily Johnson (Yup'ik)

Create a self-published catalog for the original visual art exhibit, *This is Displacement: Native Artists Consider the Relationship Between the Land and Identity* a contemporary exhibition where Native artists consider displacement, land, and identity in their work. Thirty artists are represented.



**Self Portrait: Between
Dinetah and Mini Sota**

30"x 40"

acrylic on canvas

2009

Carolyn Lee Anderson, artist

**Donel Keeler
(Crow Creek Dakotah)**

purchase display equipment for future art shows to create an inviting museum quality setting to promote artwork.



Buffalo Hunters

30"x40"

Acrylic

2008

Rochelle Kulei
(Northwestern Band Shoshone)
Illustrate Shoshone legends on a
reservation vehicle that will be
reconfigured to be disassembled
an reassembled for shows.



Sacred Wheel
60"x72"
acrylic, oil, cut beads, raffia and sticks
2009

Linley Logan (Seneca)

purchase a printmaking press to have more leverage to experiment and challenge his creative process



Dew Eagle Strikes the Sky

9"x12"

inked & embossed linoleum print

2010

Mandy McCullough

(White Earth Chippewa)

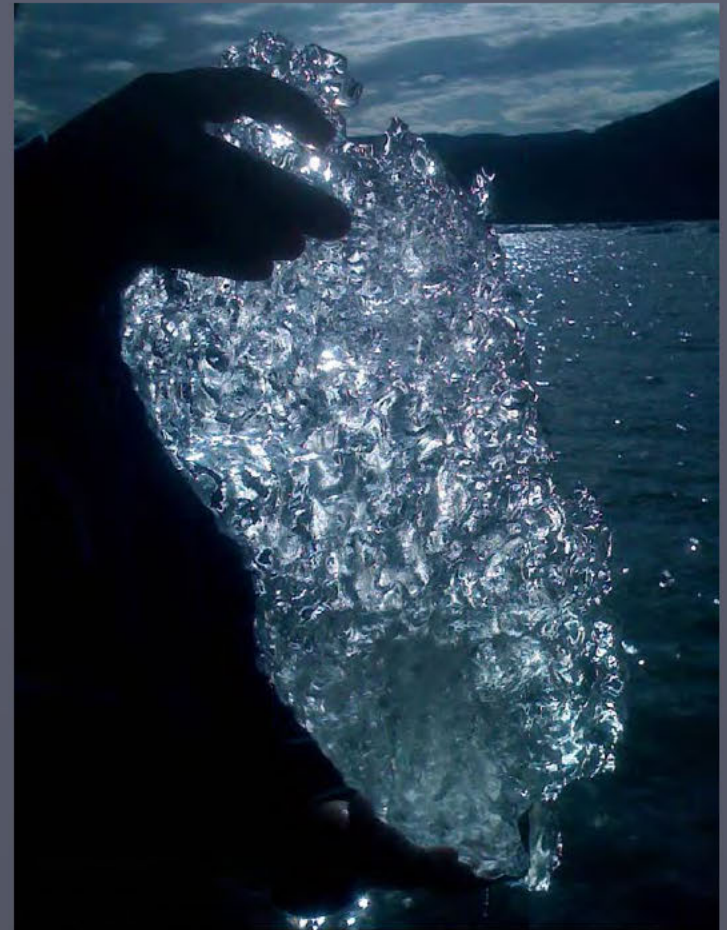
Create Native greeting cards
featuring her beadwork and other
art through the purchase of photo
editing software, card supplies.
Create digital catalog of work.



Necklace 16"
dentalium shell, glass beads, wire, silver
clasp
2009

**Larry McNeil
(Tlingit)**

prepare artwork for "Global Climate Change: Caught in the Act" to be exhibit ready to enhance the number of venues that might be able to host the show.



McNeil Art; Work in progress for global climate change series

Glacier Ice
18"x24"
digital photograph
2010

Jenni Monet

(Laguna Pueblo)

help with post-production costs associated with the film
“Losing Ground” the story of the Inupiat village of Kivalina, Alaska



**Ramon Murillo
(Shoshone-Bannock)**

Purchase materials to make multiple plate etchings and materials to
mat and frame work



Preservation of Light

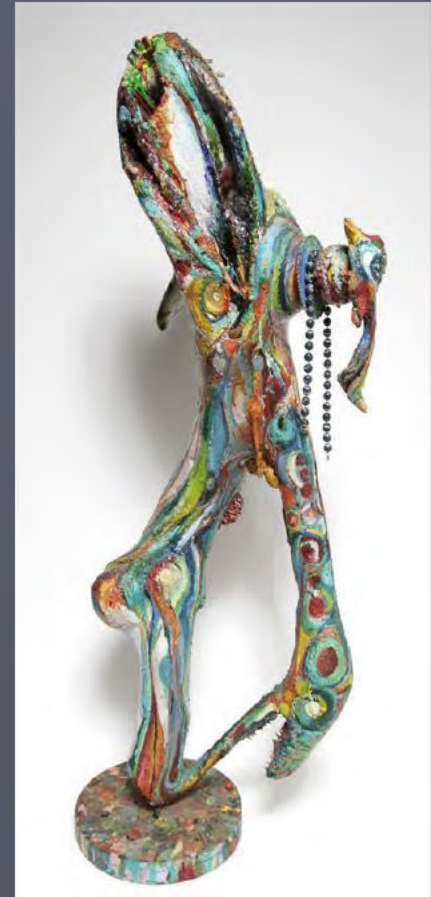
24"x32"

7 screen serigraph

2009

Tyrone Patkoski (Tulalip)

Develop a professional portfolio and brochure
to market work. Purchase additional art
supplies, reproduce original paintings in print



Lazarus
34.5"x 16"
oil, driftwood, beads, pine cones,
bird quills, false teeth, rose
thorns, shells, button eyes, IBM
wheel writer
2008

Elizabeth James-Perry (Aquinnah Wampanoag)

Create a densely hand woven twined tapestry pictorial wall-hanging in exploration of the importance of the whale, Putapah using natural dyes



Thunderbird Over Red Earth

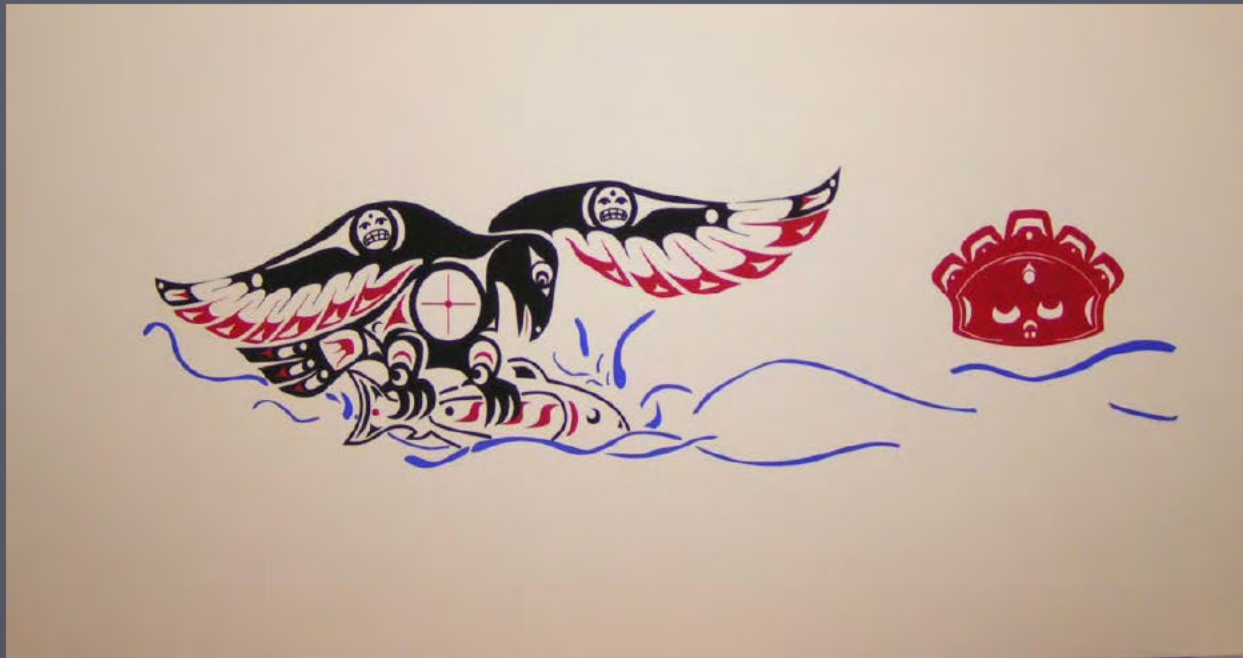
6.5"x8.1"

organic hemp yarn, natural dyes: madder root, fustic, logwood

2010

**Michael Nawamuks Peters
(Squaxin Island)**

Learn how to mat and frame prints



Fishing at Dusk

14"x24"
silk screen
2009

**Lillian Pitt
(Warm Springs/Wasco)**

**Create hand-forged steel bases
for 3 sculptures to be included in
a November 2010 show**



Two Crows
16"x18"x11"
cast New Zealand lead crystal, hand forged steel, maple burl base
2008

Sarah Sense (Chitimacha)

create new body of work, "Origins" (woven photographs over paper) based on travels to Central and South America in 2010



JUMP! Palm Trees and Cypress Trees

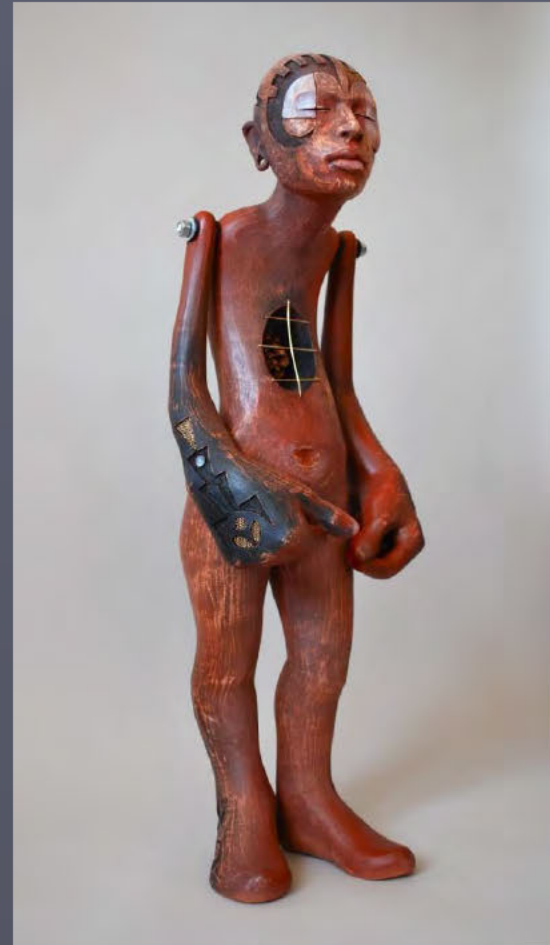
34"x68"

silkscreen, archival laser prints, artist tape

2010

**Rose Simpson
(Santa Clara Pueblo)**

Create and install sustainable art installation project at Buffalo Thunder Resource and Casino in Pojoaque Pueblo, New Mexico to highlight the dichotomy between traditional and modern relationships to architecture and aesthetic.



Protector

27"x13"x6.5"

ceramic, bronze screen, brass wire, bolts, iron oxides, spray paint, pine

cone

2008

Lisa Telford
(Haida)

Purchase computer, software and create a web page to educate the public on the process of Haida basketry creation from collection to processing, to weaving and to promote her art.



Clam Basket

8"x7"

red and yellow cedar, blue dye

2010

Lisa Telford

John Seven Wilson (Nez Perce)

To produce artwork for galleries and shows,
and to research full detail of legends for illustration for
development of a book on Nez Perce legends



Stick Indians

18"x24"

acrylic on masonite

2010